



St. Matthews Living

City of St. Matthews
3940 Grandview Avenue
P.O. Box 7097
St. Matthews, KY 40257-0097
Hours: M-Th 7 a.m. - 4 p.m.
F 7:30 - 11:30 a.m.

MAY 2021

Post WWII Land Grab Forms St. Matthews' Borders

If the late Alex Trebek of *Jeopardy* asked the question, "In what Kentucky city would you find St. Matthews Baptist Church?" he would not accept the answer, "What is St. Matthews?" Like many buildings and houses in the St. Matthews area, St. Matthews Baptist Church is actually located within the borders of the City of Louisville. In fact, though the houses on the south side of Grandview Avenue, starting in the 3500 block going towards Cannons Lane all fall within the City of St. Matthews, the houses across the street are in Louisville....except for 4 houses in the 3300 block on the north side, which are in St. Matthews. So if "What is St. Matthews?" wasn't technically correct enough for Alex, it may at least be an appropriate question for us.

The jagged borders you see on the map at center were created starting after World War II in a land grab where the City of Louisville decided to add to its eastern

border. "After the war, neighborhoods in what later became known as St. Matthews were developed to accommodate returning servicemen and their families," said Councilman Bernie Bowling, Jr. When a strip mall was

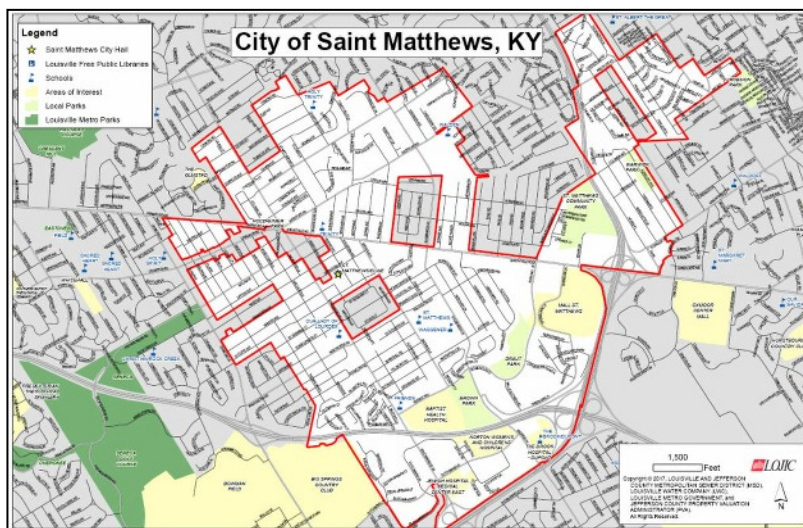
annex the old Greathouse School, which today houses City Hall and St. Matthews-Eline Library, because they would not bring in tax dollars. They annexed properties right up to the right-of-way, but not including the right-of-

way, so that they did not have to maintain the right-of-way.

Local businessmen, including former mayor Bernie Bowling, Sr., were upset with the haphazard way the City of Louisville was incorporating the land in an obvious attempt to grab tax dollars, and went to court to try and stop them. Though the attempt was

unsuccessful, the men gathered enough support to incorporate the remaining land as the City of St. Matthews.

"When you are not part of a city, you have no garbage pickup or other city amenities. That is why so many areas incorporated—so they could get the tax dollars to afford garbage pickup, police, and road repair," said St. Matthews Mayor



built on Shelbyville Road in the late 1940's, Louisville turned its eyes to the unincorporated land and potential tax dollars, and the land grab began.

In its attempt to gain tax dollars while not investing money, the City of Louisville annexed all land that was zoned commercially and any properties that were hooked up to the sewer system. They did not annex vacant land nor did they

Continued on page 10

A Message From...

Everywhere we look, the City of St. Matthews is starting to emerge from its COVID cocoon. Businesses are reopening and the increase in complaints to the city's Code Enforcement Department shows that residents are stretching and taking a look around, wanting to make sure their city stays safe and looks great.

Besides seeing more people out in the parks and neighborhoods, folks are starting to shop more. Already in the first three months of 2021, St. Matthews has issued 49 new business licenses. Commerce

in St. Matthews is moving in a positive direction, and we want to remind residents to shop local whenever possible.

As we continue to spread our wings, let's remember to do our part in complying with Center for Disease Control and state COVID regulations and guidelines. Be kind to those around you by wearing masks when required and socially distancing. If health allows, consider getting the COVID vaccine to protect yourself and others. Working together, residents will help St.

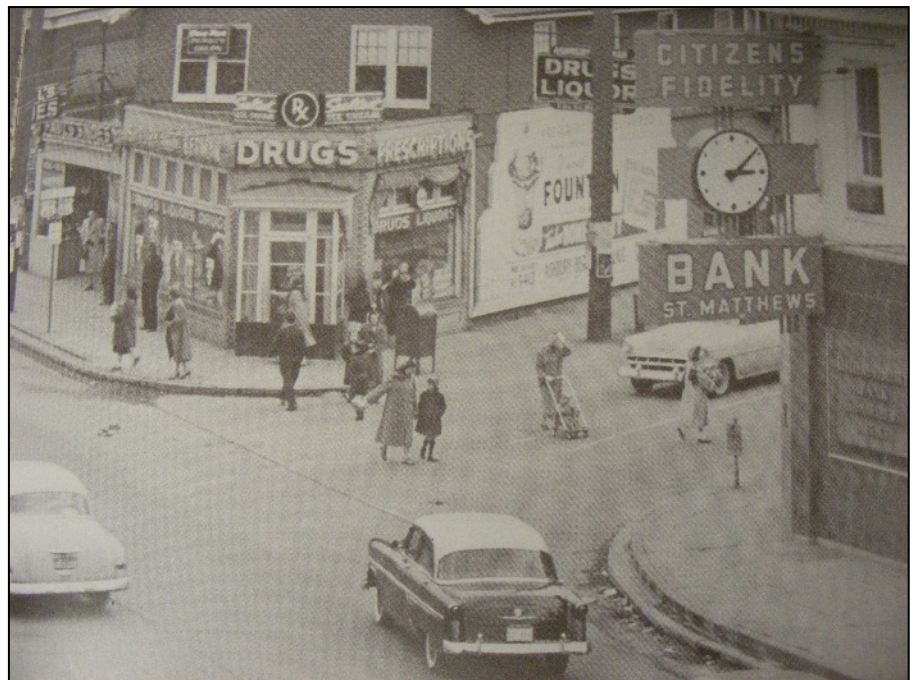
Matthews gain the full strength and beauty of a soaring Monarch.



Duck Donuts is one of 49 new businesses that opened in the first quarter of 2021.

Hometown History 1955

This feature spotlights a moment in time when our city looked a lot different. Where do you think this picture was taken? See page 11 to solve this issue's Hometown History mystery.



Louisville Gas & Electric

502-589-1444

Fast path options are: 1-1-1 (gas) and 1-1-2 (electric).

Emergency Contact Numbers

Louisville Water Company

502-583-6610

To report emergencies like water main breaks or broken fire hydrants.

Easy Being Green



Pop-Up, Drop-Off

“Pop-Up,
Drop-Off”
waste disposal
events for free

recycling and large item disposal are being held May 22 at Eastern High School, June 26 at Sun Valley Ball Field Complex, and July 24 at Metro Fleet Services. Drop off items to be recycled include: up to 3 electronic items, metal items and appliances (no refrigerators or items containing coolant), up to 4 passenger tires, household recyclables, and documents for shredding. Yard waste following

curbside rules and wooden pallets will be composted. Large household items will be landfilled, and prescription medicine will be disposed of properly. For more dates and information, see <https://louisvilleky.gov/government/public-works/pop-drop-waste-disposal-events>.

Free Trees

Free trees are still available for planting this year in your public right-of-way while supplies last. Others will be placed on the list for next



planting season. See the city website (Public Works / Trees) for details or contact city hall at 895-9444.

21 Eco-Friendly Summer Tips

Want some easy ways to go green in the summer? Visit <https://biofriendlyplanet.com/green-ideas/eco-friendly/21-simple-eco-friendly-summer-tips/>. There, you will find ideas as simple as letting in light, planting native plants, and planning a stay-cation.

Sign Up for Reach Alert Notifications

If you have not signed up to receive information through Reach Alert about events or situations that may affect St. Matthews, please do so. You may register to receive information via multiple formats. Go to www.reachalert.com and click on the blue text, “Create an account.”

When prompted, use the following information to register: Network Name – St. Matthews (city); Role – Resident or Business; and Address – enter your address in the first box and your street name in the second box. Creating this account gives you another way to stay connected at a time



when you may be feeling isolated. Also consider programming the city’s new, dedicated phone number for Reach Alert—502-230-8840—into your phone so that you don’t ignore or decline calls from a number that may be unfamiliar. Take a few moments to sign up today!



Recycling is collected every other week on the same day as trash on weeks highlighted in red. Holidays marked in blue will delay recycling and trash one day.

May 2021						
S	M	T	W	T	F	S
						1
2	3	4	5	6	7	8
9	10	11	12	13	14	15
16	17	18	19	20	21	22
23	24	25	26	27	28	29
30	31					

June 2021						
S	M	T	W	T	F	S
		1	2	3	4	5
6	7	8	9	10	11	12
13	14	15	16	17	18	19
20	21	22	23	24	25	26
27	28	29	30			

July 2021						
S	M	T	W	T	F	S
				1	2	3
4	5	6	7	8	9	10
11	12	13	14	15	16	17
18	19	20	21	22	23	24
25	26	27	28	29	30	31

Police Beat

Fingerprinting Limited and By Appointment Only

As of December 8, 2020, the St. Matthews Police Department stopped providing in-state licensed fingerprint cards because the Commonwealth of Kentucky transferred that responsibility to Identigo, a



private contractor. SMPD will still provide fingerprint cards to individuals wanting non-

state licensed and federal fingerprint cards by appointment only Monday–Thursday, 9:00 a.m.–3:00 p.m. To schedule, contact the SMPD at 899-2537.

Prevent Heat-Related Deaths

Heat stroke is the leading cause of non-crash, vehicle-

related deaths in children under 15. Heat stroke happens when the body is not able to cool itself quickly enough. A child's body heats up three to five times faster than an adult's does, and organs begin to shut down when a child's temperature reaches 104 degrees. Because cars heat up quickly, in just 10 minutes, a car can heat up 20 degrees.

To prevent the unthinkable, always check the back seat and make sure all children are out of the car before locking it and walking away. Be extra alert

when there is a change in your routine, like when you take a different route to work or to childcare. Have your childcare provider call you if your child is more than 10 minutes late. Put your cell phone or purse in the backseat with your child.

At home, teach your child that cars are not safe places to play and lock your car when you are not in it.

If you see a child alone in a car, call 911, get the child out of the car, and spray the child with cool water.



Crime Buzz



Catalytic Converter Thefts

Catalytic converters are a component of every vehicle's exhaust system. A catalytic converter is a device that converts toxic chemicals

produced by your vehicle into relatively harmless gasses before they are emitted into the atmosphere. Catalytic converters contain precious metals like platinum, palladium, and rhodium. Thieves steal these devices and sell them on the black market where they are later harvested for their precious metals at illegal processing facilities. The cost to replace a catalytic converter ranges between \$500 and

\$4,000 depending on factors such as the type of vehicle you own and your insurance coverage.

Catalytic converters are typically located underneath vehicles in the center of the undercarriage. Traditionally, SUV's and trucks have been targeted because their high clearance makes it easy for thieves to gain access. If your

Continued on page 5

Continued from page 4

catalytic converter is stolen, you should drive it straight to your preferred mechanic/muffler shop. You will know if your catalytic converter has been removed because your car will make a loud rumbling noise. Many different security devices can be installed to deter thieves from targeting your vehicle at a fraction of the cost of a full replacement.

Prevention tips:

- Park your vehicle in a secure garage.
- If you don't have a secure garage, park your car in areas easily seen by passers-by.
- Park in well-lit areas.
- If possible, park near security cameras.
- Install motion sensing lights in your driveway.
- Install a catalytic converter protection device.
- Etch your car's VIN number or license plate number on the converter to make it easier to

identify a ring of thieves in the future.

Free House Watch

SMPD provides free house watches for residents on vacation or at other times residents must be away from home. To learn more about how this works or to schedule a free house watch, call SMPD at 893-9000 or fill out the online form on the City website at www.stmatthewsky.gov.

St. Matthews Area Ministries—Easy Opportunities to Give**Golf Classic**

St. Matthew's Area Ministries (St. MAM) encourages you to save the date for its annual Golf Classic Monday September 13, 2021 at Wildwood Country Club. Registration begins June 1 at www.stmam.com.

Kroger Community Rewards

It's easy to support St. MAM while you shop at Kroger. Simply register your Kroger Plus card at kroger.com/communityrewards and sign

in to your Kroger Plus account. Then select St. Matthew's Area Ministries (VJ133), and you're done!

Smile.Amazon.Com

Amazon will donate 0.5% of your purchases to St. MAM whenever you shop at Amazon Smile. Same selection as Amazon, just with the added bonus of donating back to your favorite charity.

Facebook

Go to WeAreStMAM on Facebook and like, follow, and share our Facebook page. Create a Facebook fundraiser and share it with your friends and family. There aren't any credit card fees when donating through Facebook.

St. Matthews-Eline Library: Check it out!

All libraries are now open for "grab and go" service. Grab and go includes browsing or picking up on-hold library materials for a limit of 90 minutes a day and using a self-check out kiosk. Masks and temperature checks are required to enter a library and all patrons age 5

and older must properly wear a mask at all times.

For patrons who prefer contactless service, curbside pickup is still available. As part of expanded access, in-person computer use, printing, and free faxing services are now available without an appointment.

St. Matthews-Eline Library is continuing to hold many events and programs virtually, including

storytime, arts and crafts, and movie and book club discussions. For a full list of programs, go to <https://events.lfpl.org/events/?ID=11>.

Summer Reading

This year's Summer Reading Program theme is Camp LFPL. More exciting information will be available in the coming weeks at www.lfpl.org.

St. Matthews Team Highlights

This feature highlights 3 City of St. Matthews team members.

Judi Kassebaum, Administrative employee



Judi Kassebaum has been with the city since 2017 and manages business licenses and occupational taxes.

The City of St. Matthews has established by ordinance that business licenses are required for all businesses or corporations located in the City of St. Matthews and/or businesses coming into the city to conduct work. An initial business license application includes a flat filing fee, with subsequent renewal fees based on gross receipts. Renewals for business licenses and occupational tax bills are mailed out in January and due April 30. Licensees receive a 50% discount for all payments on business license gross receipts tax paid by April 30 of each year.

"I enjoy helping businessowners and office managers navigate through the system and answering their questions," said Judi. "They are always very friendly."

Outside of work, Judi delights in reading, kayaking, and whitewater rafting. She is married and has two adult children, Ian and Kylie.

Aaron McCarley, Public Works employee

Aaron McCarley has been with the city for 14 years in the Public Works Department. He mows city properties in the spring and summer and performs leaf removal and equipment repair in the fall and winter. "I enjoy making the parks look nice and really like working outdoors," he said. "It's nice to have a dependable job with a good atmosphere."

Working on equipment is something that comes easily to Aaron. Since he was 8 or 9, he



has been working on old cars, first with his dad and then with a group of like-minded street rod

enthusiasts. "My friends and I swap stuff for our cars and help each other out, each of us having our niche. I do a lot of paint and body work," he said. Aaron has two 1955 Chevys and a 1957 Chevy that he has converted into street rods and has been featured in the magazine *Street Rodder*.

Sgt. Charlie Portman, Police employee

Sergeant Charlie Portman has been with the St. Matthews Police Department since 2006, steadily rising through the ranks to his current position as Administrative Sergeant.

Starting as a patrol officer, he was promoted to sergeant in the Criminal Investigations Department before moving into his current position. He currently manages police systems vital to the work of the department, purchases and maintains department vehicles and radio equipment, among many other duties.

"Working for the St. Matthews Police Department has been very rewarding— no one day is like the next," said Sgt. Portman. Portman noted that most people have very limited interactions with police officers, usually only those who have either been victimized or are committing crimes. "Often a crime can seem like not a big deal to an outsider, but to the victim of that crime, it is hugely important. At the St. Matthews Police Department we take this to heart. The administration encourages officers to take the extra time with victims, and that is paramount. I cannot imagine a better place to serve the community."

When he's not working for SMPD, Sgt. Portman has the privilege of serving as assistant Scout Master for his son's Boy Scout troop.



Code Words

The Code Enforcement Department has received numerous complaints about improper parking on the streets or on the public right-of-way. Please note the following parking restrictions:

- No vehicle is to be parked within 7.5 feet of a fire hydrant so that the fire hydrants can remain accessible to the fire department.
- No vehicle may be parked even partially on or projecting over any public sidewalk.
- Parking is prohibited within 30 feet of a stop sign on either side of the roadway as it creates a visibility issue for a driver to safely proceed.

- Vehicles parked on the public right-of-way should be parked headed in the direction of travel on the adjacent lane and with its right-hand side toward and parallel with the edge of pavement.
- No inoperable vehicle may be parked on the public right-of-way for more than 24 hours. Operable vehicles parked for more than 24 hours on the public right-of-way will be deemed to be abandoned. In either situation, the vehicle is subject to citation and fine, towing, or both.
- Trucks of any kind with dual rear wheels, RVs, boats, mobile homes, motor homes, semi-tractors and/or trailers, any

other kind of trailer, campers, or parts of such vehicles are prohibited from being parked on the public right-of-way within a residential or apartment area or adjacent to such an area. Specifically excepted from this prohibition, provided such vehicle has no more than 2 axles and does not have dual rear wheels, are passenger vehicles, including vans, having provisions for not more than 9 passengers; pick-up trucks customarily used by the driver as a means of transportation; and any service vehicle temporarily parked for a period not to exceed 4 hours while the operator is providing service to a nearby property.

Warning Sirens Reminder to Set Up Emergency Plan

Metro Safe Emergency Management tests all warning sirens at noon on the second Tuesday of each month. Use the sirens as a

reminder that everyone should have an emergency plan for themselves and loved ones. For information on putting together

an emergency plan, visit the following website:
<http://www.cdc.gov/disasters>.

Good Neighboring

Golf Cart and ATV Operations

Golf carts and all terrain vehicles may be legally driven with a city permit on streets in St. Matthews where the speed limit is 35 miles per hour or less, but there are specific rules to follow when operating these vehicles, including:

- No crossing intersection where speed is more than 35 mph.
- Operator must have valid driver's license, carry proof of insurance in vehicle, and display slow-moving vehicle emblem.

- Operate on roadways only between sunrise and sunset. Streets where the speed limit is 35 mph or less at some point but ARE NOT available for golf carts and ATV operation are: Shelbyville, Frankfort, Chenoweth, New LaGrange, Westport, Breckenridge, Dutchman's Lane and Dutchman's Parkway, Kresge, Bowling, South Hubbards, Browns, St. Matthews Avenue, Willis, Washburn, Rudy, and Massie.

For the complete rules, go to <https://www.stmatthewsky.gov/wp-content/uploads/2020/08/Ordinance20-06.pdf>.

City Quiz Answers (from page 11)

1. One - Independence Bank
2. None
3. One - St. Matthews Mini Mart
4. One - Sparklel Bright Car Wash
5. None
6. One - Spinelli's
7. One - Burger King
8. None
9. One - KIA Store
10. Both
11. One - Mission BBQ
12. One - Thornton's

Season's Greetings

First Quarter 2021 Busy for Chamber of St. Matthews

2021 has proved to be a busy year so far for The Chamber of St. Matthews. Since January 1, it has welcomed 62 new members. In addition, The chamber has hosted ribbon cuttings for the grand openings of two new businesses.

In February, the chamber held its annual meeting virtually, handing out numerous awards including the Community Service Award, which recognizes public safety heroes who put their lives on the line to ensure the safety of those who live, work, and visit St. Matthews. Col. Barry Wilkerson, Chief of St.

Matthews Police Department, accepted the award on behalf of SMPD.



The Chamber of St. Matthews holds a ribbon cutting for Duck Donuts' opening.

The Sanders Award, recognizing one who has gone above and beyond to support the city, was given to Jared

Matthews, owner of Diamonds Pub and Billiards, Lou Lou Café and Drink, and Diamond Street Grub and Hops for his dedication to making The St. Matthews Street Festival a thriving event. The award was named for former chamber member Albert Sanders.

As St. Matthews maneuvers its way through the pandemic, the chamber thanks residents for their patience with businesses as they navigate changes in their industries and work hard to hire staff. Let's continue to be a community that loves and supports local businesses.

Alexander Hamilton Historical Society of Kentucky

The Alexander Hamilton Historical Society of Kentucky meets the third Saturday of each month at 10:30 a.m. Due to COVID, we have been holding our monthly meetings on ZOOM. Anyone interested should contact us via the AHHS web-site at <https://ahhsky.wixsite.com/ahhs-ky>.

May 15

Dr. William Nash will review *Rush: Revolution, Madness, and Benjamin Rush, The visionary Doctor who Became a Founding Father*, by Stephen Fried.

June 19

To be announced. Refer to the website in the coming month.

July 17

Mark Webster will review *A Son of Thunder: Patrick Henry and the American Republic*, by Henry Mayer.



City Hall Elevator Temporarily Out of Service

The elevator in St. Matthews City Hall is temporarily out of service while its aging parts are being replaced with newer components. It is the city's goal to have the elevator operating safely again by August.

As always, city hall offices

are accessible to the public by use of the stairs. However, if you are unable to maneuver the stairs for any reason and need in-person assistance at city hall while the elevator is out of service, please telephone the City Hall

Administration office at 895-9444 in advance of your visit to the building. Administration staff will make arrangement to have someone meet with you on the first floor.

Hot Off the Press

St. Matthews Maintains Its Fire Hydrants

There are more than 1,800 fire hydrants in the St. Matthews Fire Protection District. Two-thirds of the hydrants are public hydrants installed and maintained by the Louisville Water Company. The other third are private hydrants, or those on “private” water mains—including hydrants for commercial properties, apartment buildings, and town home developments. Fire codes dictate each hydrant be inspected annually, and the St. Matthews Fire Protection District is dedicated to the task of inspecting and maintaining them.

Maintenance for the private and public hydrants includes, among



other things, flushing, which helps to remove mineral deposits in water mains; checking rubber gaskets and moving parts for wear and tear, which can create leaks; and ensuring that the hydrants have not been damaged (e.g., if a car or truck runs into a hydrant, knocking it off its rod). Freezing

weather also poses a potential issue—if the hydrant is leaking and the water freezes, the hydrant can be damaged.

The fire crews flow test each fire hydrant in April. Any painting is completed in the summer months. And in October they are checked to make sure they drain properly before winter.

Bonnets and caps are commonly painted to follow National Fire

Protection Association guidelines for arguably the most important piece of data: water flow. When estimating the size of the fire they are up against, firefighters want to know they will have enough water. Flow rate depends on the size of pipe, including the water main, and whether the main below the hydrant is a primary feeder, secondary feeder, or distributor. Hydrants above larger mains are more likely to have high flow due to the size of the pipe.

The color of the hydrant cap concisely summarizes the water available at a given hydrant. Hydrants are classified by their rated capacities for gallons per minute (GPM):

Light blue: Class AA - 1500 GPM
Green: Class A - 1000–1499 GPM
Orange: Class B - 500–999 GPM
Red: Class C - less than 500 GPM

Your Works At Work

Due to COVID restrictions during the past year, Public Works crews were divided into two crews working alternate weeks. This means that six people have been trying to do the work of 12 people. We appreciate the patience of residents as the response time may not be what it was before COVID. With the winter behind us and COVID vaccines available, we can all look forward to better times ahead. Since the last newsletter, the following has been accomplished:

Completed Projects

- Salted intersections for smaller snow events.

- Planted new trees and removed stumps in the right of ways.
- Cleared several large trees from the right of ways blown over during recent storms.
- Continued street sign replacement project – Warwick area completed.
- Improving drainage on Massie, Winchester, and St. Germaine.
- Improving AV and council desk in City Council room.

Current Projects

- Working with MSD to finalize plans on a drainage project between Kentucky and Washburn— construction anticipated summer of 2021.

- Cleaning up landscaped areas in parks along with mulching and planting trees.
- Continuing street sign replacement project – currently in Camelot subdivision.

Future Projects

- Improvements to drainage and roadway along Sears Avenue.
- Improvements to stream in Draut Park.

St. Matthews

Continued from page 1

Rick Tonini. Today, there are 80 incorporated cities in Jefferson County. St. Matthews has annexed several smaller cities at the request of those cities when their residents could find no one willing to govern. "The residents of the cities we annexed are very happy with their choice, and so are we," said Mayor Tonini.

However, many who live in the St. Matthews area are not St. Matthews residents, and the City of St. Matthews has no jurisdiction over them. "When we receive calls regarding a neighbor's lawn that is out of control or are asked to make street repairs

and it turns out that the neighbor or the street does not fall within the City of St. Matthews borders, we refer them to the governments of bordering cities, with whom we have great relationships, but we cannot take care of the issues ourselves," he said.

In fact, many roads that run through the St. Matthews area do not belong to St. Matthews, including Westport Road, Breckenridge Lane, Chenoweth Lane, Lexington Road, Frankfort Avenue, Cannons Lane, Shelbyville Road, Bowling Boulevard, Browns Lane, Hubbards Lane, Kresge Way, Rudy Lane, and Washburn Avenue. These

roads are maintained by Metro Louisville or, in the case of Shelbyville Road, which is Route 60, by the Kentucky Transportation Cabinet.

So it turns out that tax dollars are important and you can bet if you are a resident or businessowner in the incorporated City of St. Matthews, your tax dollars are paying for all the amenities you enjoy. And if those who don't own a business or home in the City of St. Matthews also benefit from their neighbors' well-maintained homes and good roads well, that's all part of being in the St. Matthews area. You're welcome.

CITY QUIZ: Which location is actually within the St. Matthews border?

1. Independence Bank (3901 Shelbyville Rd.)	St. Matthews Station (117 Breckenridge Lane)	one	none	both
2. Vogue Center (3723 Lexington Rd.)	Stock Yards Bank (3794 Lexington Rd.)	one	none	both
3. Rainbow Blossum (3738 Lexington Rd.)	St. Matthews Mini Mart (316 Wallace Ave.)	one	none	both
4. Eclipse Bank (3827 Shelbyville Rd.)	Sparkle Bright Car Wash (108 Chenoweth Lane)	one	none	both
5. Graeter's Ice Cream (140 Breckenridge Lane)	Nanz & Krafts (141 Breckenridge Lane)	one	none	both
6. Plehn's Bakery (3940 Shelbyville Rd.)	Spinellis Pizza (4001 Shelbyville Rd.)	one	none	both
7. White Castle (4020 Shelbyville Rd.)	Burger King (4030 Shelbyville Rd.)	one	none	both
8. Verizon (4169 Shelbyville Rd.)	Old National Bank (4201 Shelbyville Rd.)	one	none	both
9. Oxmoor Center (Shelbyville Rd.)	KIA Store (7301 New LaGrange Rd.)	one	none	both
10. Planet Fitness (4301 Shelbyville Rd.)	Oriental House (4302 Shelbyville Rd.)	one	none	both
11. Office Depot (4515 Shelbyville Rd.)	Mission BBQ (4607 Shelbyville Rd.)	one	none	both
12. Goodwill Industries (4224 Shelbyville Rd.)	Thornton's (4500 Shelbyville Rd.)	one	none	both



**Answers to
City Quiz
found on
page 7**

Park Place

The City of St. Matthews is currently working with consultants to refurbish the St. Matthews Community Center, located on Ten Pin Lane.

“St. Matthews is always working to ensure that our park system is welcoming to our residents and visitors, not only with seasonal maintenance, but by making upgrades and other improvements,” said Councilman Mary Jo Nay. “The building has served well over the years for city functions, as well as countless rentals for private wedding receptions, family reunions, parties, and business

events. However, just as time wears on our private homes, it’s time to update.”

Inside refurbishments will include new lighting, flooring, and wall coverings. The space will be reconfigured to include a bridal dressing room, a unisex handicap-accessible restroom, geothermal heating and cooling, kitchen appliances, and stainless-steel commercial accessories for food safety and efficiency.

Plans for outside the building include an outdoor patio space to be used for overflow from community center events or for an out-

door wedding with a limited number of guests. New landscaping will be added in the front and rear of the center as well as additional parking.

Work is expected to begin early this summer and will take several months to complete.

“We hope everyone will visit our 4 parks this year while continuing to comply with CDC and state recommendations concerning masks and social distancing for COVID safety,” concluded Councilman Nay.

2021 PVA Online Conferences begin April 23 at Noon

The Jefferson County PVA has been granted an extended Open Inspection period, from noon on April 23 to 4 p.m. on May 17 for Jefferson County property owners to complete the first step in appealing their property assessment, an online conference where the PVA will review your property assessment with you if

you feel it does not represent the fair market value of your property. If you are disabled or do not have access to technology, you can schedule a telephone conference. To ensure you receive an appointment, please call 502-574-6380 before May 12, 2021.

When the assessment of your property increases or decreases

from the prior year, the PVA will send you a reassessment notice in late April. Even if you didn’t receive a notice, as a property owner, you have the right to contest your assessment each year. By law, certain steps must be followed in the process. You can find more information at www.jeffersonpva.ky.gov.

Hometown History - 2021

THEN

The picture on page 2, from the files of the Courier-Journal, features the Corner drug store and Citizens Fidelity Bank at the intersection of Breckenridge Lane and Shelbyville Road, circa 1955.

NOW

The spot once occupied by the Corner drug store is now the site of St. Matthews Station while PNC Bank has taken the place of Citizens Fidelity. The roads have been widened, so that the busy intersection is mostly filled with cars today instead of the pedestrians of yesteryear.



City of St. Matthews
3940 Grandview Avenue
P.O. Box 7097
St. Matthews, KY 40257-0097

STD PRST
U.S. Postage
PAID
Louisville, KY
Permit #976



ST. MATTHEWS

Your Elected Officials for the City of St. Matthews:

Mayor Richard J. Tonini

City Council

Bernard Bowling

Cathi Clark

Frank Flynn

Tim Holland

Stuart Monohan

Mary Jo Nay

Amy Olson

Tony Weiter

City Council meetings begin at 7 p.m.
on the second and fourth Tuesday of
each month.

City Council meeting minutes are
online at www.stmatthewsky.gov.

Reach Alert

**To receive emergency
and/or community
service notifications
through St. Matthews'
Reach Alert system,
sign up at
www.reachalert.com
or call 1-877-307-9313.**

Government Access

City Hall Office:	895-9444
Code Enforcement:	899-2512
Police Department:	893-9000
City Engineer:	899-2518
Public Works:	899-2517
Property Taxes:	899-2511
Police Records:	899-2537

Emergency: 911