



St. Matthews Living

City of St. Matthews
3940 Grandview Avenue
P.O. Box 7097
St. Matthews, KY 40257-0097
Hours: M-Th 7 a.m. - 4 p.m.
F 7:30 - 11:30 a.m.

NOVEMBER 2020

History Lessons Lie in Wait in Local Cemeteries

Soon children will don costumes of witches and ghosts along with their favorite cartoon characters, while right around the corner from them lurk the spirits of historical forebears just waiting to be discovered.

The cemeteries of St. Matthews are one of the City's hidden gems. Besides providing history lessons for the City's residents, they make great places to walk, especially now that socialization has been limited by the COVID pandemic. And if parents are looking for a way to get their kids outdoors and incorporate a home school lesson, they couldn't do better.

Floyd-Breckinridge Cemetery

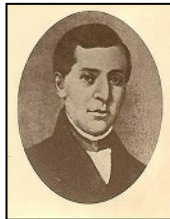
Floyd-Breckinridge Cemetery is the oldest of St. Matthews' graveyards, nestled silently among local residences at 1004 Jamestown Court off Prince William Street. Notably interred there is Colonel John Floyd, a surveyor and pioneer from Virginia, who was the first settler in Jefferson County to own the land he lived on.

Floyd purchased 2,000 acres of land and established a settlement on Beargrass Creek known as Floyd's Station. The spring-

house for Floyd's Station still stands today, located at the dead end of Stratford Lane, in the Jamestown Apartment complex.

In 1780, Colonel Floyd was appointed by Virginia Governor Thomas Jefferson as Justice of the Peace, Trustee of Louisville, County Lieutenant, and Colonel of Jefferson County Militia, upon the recommendation of General George Rogers Clark.

Floyd participated in wars with Native Americans and was one of the rescuers when Daniel Boone's daughter, Jemimah, and two other teenagers were kidnapped by Cherokee and Shawnee natives. Floyd was killed in a skirmish with Native Americans in 1783.



Thomas Jefferson as Justice of the Peace, Trustee of Louisville, County Lieutenant, and Colonel of Jefferson County Militia, upon the recommendation



Though only lived to age 32, Floyd's legacy was strong. Both his son, John Floyd, and his grandson, John B. Floyd, became Governors of Virginia. In addition to Floyd's Station, Floyd lent his name to Floyd County, the Ohio River tributary of Floyds Fork, the town of Floydsburg, and Floyd Street in downtown Louisville.

Parks Cemetery

Parks Cemetery is located about a block from the Floyd-Breckinridge



Cemetery at 5721 Prince William Street, surrounded by a short

stone wall. This hallowed ground is the resting place of Floyd Parks, a wealthy landowner and shareholder in the Shelbyville and Louisville Turnpike Road and the Taylorsville and Louisville Turnpike Company, who died in 1865. The inscription on his monument reads: "Here rests in peace beneath this silent clod, An honest man, the noblest work of God."

In his will, Parks set aside half an acre of his land near the homestead as a burying ground for his family. Purportedly, Parks

Continued on page 10

A Message From...

Get Your Property Tax Discount

The Oct. 31 deadline for a 40% discount on your real estate property taxes is rapidly approaching. Residents may want to contact their mortgage companies to remind them of the date to take advantage of the 40% discount. Contact City Hall if you are unsure if the tax has been paid.

Confirm Insurance Tax Code Is Correct

The City asks residents to confirm the municipal taxes they are paying on insurance are coded to St. Matthews and

not to Louisville, Lyndon, or another Kentucky city. Though St. Matthews did not implement the tax, it is important that the City receive the taxes paid by its residents. These funds underwrite the many benefits St. Matthews provides to its residents, benefits that other cities do not provide.

To inspect the tax code, look for the line item "Kentucky Tax and Collection Fee" on your insurance policy and verify that St. Matthews' code of 0463 is being used. If another code is being used, contact your insurance agent to make the change so that St. Matthews

resident taxes stay in St. Matthews.

Shop St. Matthews

As you begin to shop for your holiday gifts, don't forget to check out your local merchants. Supporting local St. Matthews businesses is a way to give back to the City that provides so many services to you.



Hometown History 1950s

This feature spotlights a moment in time when our city looked a lot different. Where do you think this picture was taken? See page 11 to solve this issue's Hometown History mystery.



Louisville Gas & Electric

502-589-1444

Fast path options are: 1-1-1 (gas) and 1-1-2 (electric).

Emergency Contact Numbers

Louisville Water Company

502-583-6610

To report emergencies like water main breaks or broken fire hydrants.

Easy Being Green



Use Regular Pickup to Dispose of Christmas Trees

Live Christmas trees can be disposed of along with your regular trash and yard waste pickup. It is not necessary to cut the tree in any specific lengths.

Place your tree at the edge of the road or in the area where your trash and yard waste are picked up. Trees should be free of decorations such as lights, ornaments, or other trimmings.

Recycle Holiday Gift Boxes

Don't forget to recycle your holiday gift and other boxes. To be safe, break up the boxes so that they fit into your recycling container. This way you do not advertise to thieves that you have new items in your home.

Request A Tree Planting

The City of St. Matthews plants new trees in the right-of-way

areas throughout the City each January. To request that a tree be planted in the right-of-way area in front of your property, contact City Hall at 502-895-9444 or use the Request A Tree form from the City website at www.stmatthews.ky.gov/tree-planting/.

The species of trees to be planted changes each year upon the recommendation of an arborist; therefore, it is not possible to make individual requests for a specific species. Once the tree is planted it becomes the abutting property owner's responsibility.

Sign Up for Reach Alert Notifications

If you have not signed up to receive information through Reach Alert about events or situations that may affect St. Matthews, the current pandemic makes it more important than ever that you do so. You may register to receive information via multiple formats. Go to www.reachalert.com

and click on the blue text, "Create an account." When prompted, use the following information to register: Network Name – St. Matthews (city); Role – Resident or Business; and Address – enter your address in the first box and your street name in the second box. Creating

this account gives you another way to stay connected at a time when you may be feeling isolated. Take a few moments to sign up today!



Recycling is collected every other week on the same day as trash on weeks highlighted in red. Holidays are marked in blue and will delay recycling and trash one day.

| November 2020 | | | | | | |
|---------------|----|----|----|----|----|----|
| S | M | T | W | T | F | S |
| 1 | 2 | 3 | 4 | 5 | 6 | 7 |
| 8 | 9 | 10 | 11 | 12 | 13 | 14 |
| 15 | 16 | 17 | 18 | 19 | 20 | 21 |
| 22 | 23 | 24 | 25 | 26 | 27 | 28 |
| 29 | 30 | | | | | |

| December 2020 | | | | | | |
|---------------|----|----|----|----|----|----|
| S | M | T | W | T | F | S |
| | | 1 | 2 | 3 | 4 | 5 |
| 6 | 7 | 8 | 9 | 10 | 11 | 12 |
| 13 | 14 | 15 | 16 | 17 | 18 | 19 |
| 20 | 21 | 22 | 23 | 24 | 25 | 26 |
| 27 | 28 | 29 | 30 | 31 | | |

| January 2021 | | | | | | |
|--------------|----|----|----|----|----|----|
| S | M | T | W | T | F | S |
| | | | | | 1 | 2 |
| 3 | 4 | 5 | 6 | 7 | 8 | 9 |
| 10 | 11 | 12 | 13 | 14 | 15 | 16 |
| 17 | 18 | 19 | 20 | 21 | 22 | 23 |
| 24 | 25 | 26 | 27 | 28 | 29 | 30 |
| 31 | | | | | | |

Police Beat

School Safety Zone

As schools start to reopen, remember to safely share the roads with school buses, pedestrians, and bicyclists, and to provide children with the necessary knowledge to stay safe while getting to and from school.

Depending on their age, children may not be able to judge speed and distance from oncoming traffic accurately. They are also smaller and harder for drivers to see.

Parents are asked to practice using crosswalks with their children to make sure they know the how to walk to school safely.

Get Your Fingerprints Done by SMPD

Fingerprinting services are available at the St. Matthews Police station. For now, the service is by appointment only Monday–Thursday from 9 a.m.–3 p.m. Contact the SMPD front office to schedule at 502-899-2537.

The cost of fingerprinting is \$10 per card, and residents should bring their own cards

for printing. Payment must be made by check, money order, or exact change. Credit cards and debit cards are not accepted.

National Night Out Cancelled

SMPD has cancelled its 2020 National Night Out (NNO) event due to COVID-19. NNO is an annual community-building event that promotes police-community partnerships and neighborhood camaraderie to make our neighborhoods safer, better places to live.

Despite the cancellation, SMPD encourages residents to get outside and meet their neighbors by taking walks around the neighborhood, utilizing face coverings and proper social distancing protocols.

SMPD Hiring and Promoting

The St. Matthews Police Department is in the process of selecting new hires to fill openings due to retirements and personnel changes.

The department is also holding testing for the rank of sergeant. Candidates for promotion will undergo a written examination along with an oral assessment board and Command staff interviews.

Detective Eddie Napier

Retires

Detective Eddie Napier has retired after 33 years in law enforcement. Eddie spent 20

years with the Louisville Metro Police Department. After retiring from LMPD in 2007, he joined the St. Matthews police force, where he spent the next 13 years serving citizens as both a patrol officer and a detective. Said St. Matthews Police Chief Barry Wilkerson, “Eddie is the epitome of what a police officer should be, and he will be greatly missed. We wish him the best in his retirement.”



Crime Buzz



Prevent Car Break-Ins

Follow these simple tips to prevent car break-ins:

- Don't leave valuables in your car in plain sight or slightly hidden; lock them in the trunk.
- Always lock your car when you leave it, even in front of your house.
- Once home, unload your valuables immediately. Do not

store valuables in your car any longer than necessary.

- If possible, leave no trace or sign that there might be valuables such as docking stations or connector cables inside your car. Signs of these items may tempt a thief and end up costing you hundreds of

Crime Buzz

Continued from page 4

dollars to replace a broken window.

- Try to park in busy, well-traveled, and well lighted areas. Be aware of your surroundings.
- If you have an alarm or anti-theft device, make sure they are operational and set—this can be an effective deterrent to an auto burglar who likes to choose easy targets.
- Don't use hide-a-keys; thieves know the best places to find them.
- Don't think your tinted windows hide your valuables. Thieves often use flashlights to see through tint.
- Just covering a valuable radio or any valuables in your car with something like a blanket or towel

will probably only draw thieves' attention—remove the item when possible.

- Don't forget about the remote garage door opener in your car. That and the registration in your glove box may turn your car break-in into a home break-in as well.

If you see something, SAY something! Call 9-1-1 immediately if you witness a car burglary or suspect someone is checking out cars for potential theft.

Free House Watch

SMPD provides free house watches for residents on vacation or at other times residents must be away from home. To learn

more about how this works or to schedule a free house watch, telephone SMPD at 893-9000 or fill out the online form on the City website at www.stmatthews.ky.gov.

ID This Person

If you believe you can identify a person involved in criminal activity, check out Idthisperson.com. New images are posted every day of unidentified suspects. Anonymous tipsters who help identify criminals may receive a \$25 reward.



Park Place

Check Out These Fall Beauties



With fall colors starting to show, find a St. Matthews Park that is right for you and view the changing leaves in all their glory. Following is a listing of the parks and the features that make them great places to visit:

Brown Park

Passive walking paths, pavilion, stream, ducks, picnic tables and

grills, restrooms, drinking fountain, large play structure, handicap-accessible, and free parking area.

Draut Park

Passive walking path, stream and wetland bridges, nature view areas, drinking fountain, handicap-accessible, and free parking area.

Community Park

Walking path through a nature setting, picnic tables, basketball courts, baseball fields and bleachers, pavilion, drinking fountain, restrooms, and free parking area.

Warwick Park

Asphalted walk-run path circling the park, open space for ball play and games, pavilion, grills, large

play structure, basketball courts, ball backstops, drinking fountains, adult bench swings, handicap-accessible, and two free parking areas.

For more information and to view photos of each park, visit the City website at www.stmatthewsky.gov.



Hot Off the Press

Fire Pit Safety

Nothing says fall like roasting marshmallows with your family over your fire pit in the evening. When you are enjoying this special time, keep in mind these fire safety tips:

- Never leave any fire unattended, especially if there are children nearby.
- Always have a means at hand to extinguish the fire if necessary, for example a garden hose or fire extinguisher.
- Place or build your fire pit at least 25 feet away from any building or any type of combustible. Build your fire pit on a solid surface and in an open area, away from overhead trees or roof lines.
- Establish a three-foot “kid-

-free zone” around your fire pit. Teach your children and their friends the rule, and always watch children near a fire.

Visible House Numbers

Make sure that your house number is easily found, clearly visible, and well-lit at night from the street. It saves time and lives in an emergency. Numbers should be placed at the front of the residence or should be visible from the nearest fronting road with no obstructions. The numbers should be at least three inches by two inches or larger if necessary to be visible from the nearest fronting road, and in a color

distinguishable from its background.

Questions? Call SMFPD

If you have questions about fire prevention, contact the St. Matthews Fire Protection District at 502-893-7825. They have the experience you need.



St. Matthews Fire Protection District bought a new fire truck in October, which was brought here from Florida..

St. Matthews-Eline Library: Check it out!



Computer Access

Computer access, limited free printing, and faxing are now available by appointment only. Computers access is restricted to 90 minutes per day. To make an appointment, call 502-574-1772. Masks and temperature checks are required to enter Library facilities. The Library will have masks available for patrons who arrive without them. The browsing of books and other materials is not permitted at this time.

St. Matthews Eline Library is available for computer access Monday–Thursday, 10 a.m.–5 p.m., and Friday–Saturday, 10 a.m.–3 p.m.

Borrowing and Returning

St. Matthews Eline Library is offering curbside materials pickup Monday–Friday, 10 a.m.–4 p.m. Patrons who currently have items on hold must call 502-574-1611 to schedule a pickup time. The Library has begun to fill new requests, but because of reduced staffing levels due to the economic impact of COVID-19, there may be delays in fulfilling your requests. For quicker service, select books already housed at your preferred Library branch since moving books between locations will result in a delay in service.

After your pickup is scheduled, come to the Library and park in one of the numbered spots. Call the phone number on the sign and provide your name and library card number. Remain in your car with the windows up. Staff will bring your materials out and place them in your trunk. If you walk to the Library, call the phone number on the sign, and staff will place your materials on a table for pickup.

You can return materials in the book drop during open hours. The book drop will be locked Friday at 4 p.m. and reopen Monday at 10 a.m. All book drop items will be quarantined for 7 days before being processed.

Your Works at Work

Since the last newsletter, the following has been accomplished:

Completed Projects

- Removed storm debris throughout the City from multiple summer storms.
- Maintained plantings, trimming, watering, and mulch beds throughout the City and various parks.
- Cleaned public restrooms daily to meet COVID standards.
- Completed sidewalks and drainage project on Massie between Cherrywood and Ridgeway.
- Completed drainage project on St. Germaine.

- Completed drainage project on Winchester.
- Repaired sidewalk on 300 block of Hemmingway.
- Cleared and trimmed multiple alleys and drainage ditches in Warwick area.
- Repaired pavement failure along Thierman Lane.

Current Projects

- Eliminating sidewalk tripping hazard on Briarwood, Churchill, Hycliffe, Norbourne, Plymouth, and Winchester.
- Improving City Hall council room.
- Replacing culvert at Trinity Hills.

- Resurfacing City streets, including Thierman Lane, St. Matthews Avenue, Massie, St. Germaine, and Sherrin.
- Finishing street sign replacement in Camelot.
- Prepping trucks and equipment for leaf season.
- Improving Grandview alley and drainage between Macon and Breckenridge.

Future Projects

- Continuation of phased street sign replacement throughout City.
- Roadway and drainage improvements on Sears Avenue.

Fall Leaf Guidelines

St. Matthews asks residents to follow these guidelines as they rake leaves this fall:

- Do not cover catch basins with leaves or rake leaves into drainage ditches as this can cause flooding when it rains.
- Do not cover concrete pyramids or other objects that have been set along the edge of the road with leaves. These objects can get sucked up into the City's leaf vacuums and cause expensive damage to the machines.

- Residents are reminded that concrete pyramids are illegal.
 - Due to safety issues, please do not rake the leaves into the street.
- To participate in the annual Leaf Pickup, residents should look on the City website for their collection week and have their leaves raked to the front edge of their property

by Monday of that week. Crews will do their best to pick up two times each week during the Leaf Pickup. Following Thanksgiving, the crews will do a second collection, weather permitting.

For more information go to <https://www.stmatthewsky.gov/leaf-collection>.



Snow Event Guidelines

The City of St. Matthews operates a comprehensive snow removal program. Naturally, main thoroughfares receive attention first, but all City of St. Matthews streets are included in the snow removal service.

During snow events, the City asks that residents do their part:

- Park vehicles off the roads to allow snowplows and other equipment to maneuver safely, and properly clear the roads.
- Take care to ensure garbage cans are free from ice. Trash from cans containing water, ice, or garbage frozen to the cans due to

lack of proper lids will not be collected.

- Garbage cans should be set out at the street after snowfalls or when sidewalks are icy.
- Be a good neighbor and keep the sidewalks beside your residence clear of snow and ice.

Season's Greetings

2020 Virtual Street Fair Well Attended

The 2020 St. Matthews Street Festival was held online July 27–August 10. During that time, a virtual marketplace sold items normally found through sidewalk vendors at the City's popular annual street fair. Many residents turned out

to purchase goods and support their local businesses.

A live feed from The Chamber of St. Matthews' Facebook page was also available for residents to enjoy music by The Quires, Definitely Pinwheels, Brassfield, and The

Rumors. If you missed the music, you can still view the bands on Facebook at <https://www.facebook.com/watch/160064217447933/346103816792979>.

Halloween in Brown Park October 24 at Mall St. Matthews

Load up your costumed kids and prepare for a Halloween in Brown Park like you have never experienced before. To help ensure COVID-19 does not spread, Halloween in Brown Park will not be held in Brown Park this year, and it will look a little different.



This year's event will be held October 24 from 11 a.m.–3 p.m. at the Mall St. Matthews. Vehicles should enter from Bowling Boulevard onto Sherburn Lane. St.

Matthews police officers and event volunteers will guide attendees through the lot to the event. The event is limited to one car per family, and both the CDC and the State recommend that those inside the car be from the same household.

Trick-or-treating will be a touchless drive-thru experience for the attendees. At the beginning of the line, volunteers will attach a padded hook (high weight capacity) over the driver's side window for each child trick-or-treating from the vehicle. There is no need to bring your own bags as bags will be provided by event sponsor Baptist Health.

Vendors with gloved hands will fill the bags with pre-

packaged candy or non-food items as the vehicle moves from booth to booth. To limit contact with volunteers, attendees are asked to stay inside their vehicles at all times, and that only the window where the candy bags are hung be partially open.

As usual, the event will offer non-food treats for children with allergies through the Teal Pumpkin project. All those participating in the project will have a Teal Pumpkin displayed somewhere in their booth.

For more information on the event, go to <https://www.stmatthewschamber.com/halloween-in-brown-park/>.

Alexander Hamilton Historical Society of Kentucky

The Alexander Hamilton Historical Society of Kentucky meets the third Saturday of each month at 10:30 a.m. Due to the COVID-19 emergency, we have been holding our monthly meetings on ZOOM. Anyone interested should

contact us via the AHHS website at <https://ahhsky.wixsite.com/ahhs-ky>.

November 21

Dr. Richard Werking will present *The British Are Coming: The War for America*,

Lexington to Princeton, 1775-1777, by Rick Atkinson.

December 19

Dr. William Nash will present *The Quartet: Orchestrating the Second American Revolution*, by Joseph Ellis.

Light Up St. Matthews Details Forthcoming

This year's Light Up St. Matthews will be held on Saturday, December 5. Though details about the event are still being formulated, it has been decided that there will be a virtual lighting ceremony.

Stay tuned to The Chamber's website at <https://www.stmatthewschamber.com/light-up-st-matthews-2/> for upcoming details.



Code Words

Residents Must Apply to Establish a Vehicle-Pull-Off

Property owners often inquire about establishing a vehicle pull-off in front of their property along the street. A vehicle pull-off (VPO) is any type of pad placed within the public right of way between the street and property line for the purpose of parking a vehicle.

Residents must make a written request to the City of St. Matthews for a VPO. The request should include the following information:

- A scaled drawing or map of the property frontage.
- Width of the driveway serving the property.
- Distance from the street to the sidewalk, if a sidewalk exists.
- Location of any drainage structures, utilities, trees, and

landscaping between the street and property line.

- Proposed shape and size of VPO.

Once the City receives the property owner's statement of need and the requested information, the City Engineer will evaluate the site for alternatives and the feasibility of a VPO. If the City concurs that a VPO is warranted and feasible, then the design and type of surface will be discussed with the property owner.

The City will not approve the use of gravel or asphalt to construct a VPO. Only concrete, stone, brick, or a type of grid placed in the soil that permits grass to be maintained may be used.

No existing or long standing VPO may be improved upon by adding to the surface, refurbishing the

surface, or changing the surface without going through a review process.

Golf Carts and ATVs OK on Street with Permit

The City of St. Matthews permits golf carts and all terrain vehicles (ATVs) to be driven on some public streets in accordance with City Ordinance 20-06. Information and a permit application can be found at <https://www.stmatthewsky.gov/permits/>.



Good Neighboring

Report Street Lights

Report out of service street lights or ones that stay on during the day by calling the



City at 502-895-9444 or LGE Lighting at 502-589-3500 or use the City's website to contact both.

Don't Block Sidewalks

Please make sure you park your vehicles where they don't cross the sidewalk. Likewise, don't leave bicycles, toys, trash cans, and other items on the sidewalk. A blocked sidewalk poses a safety hazard to pedestrians and persons using wheelchairs as it causes them to move into the street.

Pick Up After Your Pets

Your neighbors are out walking more than ever since social lives have been hampered by COVID-19. Make sure you remember to take doggie bags with you as you walk your precious pooch. Be a good neighbor and obey the law.

Local Cemeteries

Continued from page 1



daughter, Cynthia Arterburn, was buried there in 1851, though her grave is no longer visible. The only other visible grave marker is for descendant Lewis Lentz, who was interred in 1956. Lentz' obituary stated that he was buried "in the family cemetery," so other family members may be buried there as well.

Brown Family Cemetery



The Brown (Lawrence) Family Cemetery is located in the southeast area of Brown Park at the corner of Browns Lane and Kresge Way. Safe access

to the cemetery can be made from the paved walking trails within Brown Park. A designated route leads park visitors and local history enthusiasts directly to the cemetery gate. Surrounded by long-standing brick walls and iron gates, this cemetery contains stones that date to the 1800s.

In 1810, patriarch James Brown purchased a 480-acre plantation and tract of land called Dutch Station on Beargrass Creek. Low Dutch (New Holland) Station was built by Dutch settlers in 1870, and was one of seven forts on Beargrass Creek built on land rented from Colonel John Floyd.

Brown married Urath Lawrence in 1809 and completed building a house on the land by 1820. The house still stands and now serves as the clubhouse and leasing



office for Mallard Creek Apartments. Brown and his wife eventually owned more than 1,000 acres adjoining the original land purchase.

The Browns' son, Theodore, also built a house in 1853, which is known today as the Inn at Woodhaven and is a bed and breakfast on Hubbards Lane.



According to historian Jack Koppel, the Browns also had a cemetery for the slaves who worked on their farm. Though nothing remains to mark the site other than a few rough stones, the graveyard is located on land occupied by the Cypress Pointe Apartments.

Burks Cemetery

Literally a hidden gem, Burks Cemetery is located within



the Springs Shopping Center parking lot at 994 Breckenridge Lane, surrounded by a stone wall and encircled with tall evergreen bushes.

James Burks was a wealthy farmer who built his plantation in 1821. When he married his wife, Matilda Ross, a widow with land of her own, their combined lands stretched from the Breckenridge/Dutchmans area to the Avondale subdivision off Taylorsville Road. The Burks' second son, James B. Burks, built a house on the acreage, which was

Local Cemeteries

Continued from page 10

later purchased by William C. Winchester, Jr. Winchester subsequently subdivided the



acreage, but the house, located on Winchester Place, still stands.

Both James and Matilda are buried in Burks Cemetery along with two of their sons and an infant. Their other children are interred elsewhere. Matilda's inscription reads: "Rest, Dear Mother, Rest. Thy sufferings are o'er. Thy soul to Heaven has flown, Its glories to explore."

While the spirit of Matilda Burks explores the afterworld, we are left to discover a wealth of history in our St. Matthews cemeteries and gain an understanding of how their inhabitants shaped the community we live in today. And who knows? Maybe visiting their graves will bring their spirits to life once more.

Senior Care Experts Shares Its Wish List



Like most non-profits, Senior Care Experts depends upon the generous support of kind individuals. The items most often

needed are: cleaning services, general office supplies, white and color copy paper, paper towels, #9 white envelopes, #10 white envelopes with left double windows, and 1 ½ x 2 5/8 inch white address labels.

If you have something to donate, but don't see it on the list, please

call their office at 502-896-2316 before dropping it by. You may drop off your donation any time Monday–Friday, 8:30 a.m.–5 p.m. at 145 Thierman Lane in the heart of St. Matthews.

Thank you for your support as Senior Care Experts continues to assist the oldest generation.

Hometown History - 2020

THEN

The picture on page 2 features the Ice House in the mid-1950s. The Ice House was a popular place to get ice, whether by the block or crushed. Formally known as the Merchant's Ice and Cold Storage Company, at one time the Ice House also stored foods at cold temperatures, including potatoes from the famous St. Matthews potato farms.

NOW

The land where the Ice House and its parking lot were located now encompasses Wilson Muir Bank, the Eddins Domine Law Group office, other office buildings, and Drakes, off St. Matthews Avenue.



City of St. Matthews
3940 Grandview Avenue
P.O. Box 7097
St. Matthews, KY 40257-0097

STD PRST
U.S. Postage
PAID
Louisville, KY
Permit #976



ST. MATTHEWS

Your Elected Officials for the City of St. Matthews:

Mayor Richard J. Tonini

City Council

Bernard Bowling

Cathi Clark

Frank Flynn

Tim Holland

Stuart Monohan

Mary Jo Nay

Amy Olson

Tony Weiter

City Council meetings begin at 7 p.m.
on the second and fourth Tuesday of
each month.

City Council meeting minutes are
online at www.stmatthewsky.gov.

Reach Alert

**To receive emergency
and/or community
service notifications
through St. Matthews'
Reach Alert system,
sign up at
www.reachalert.com
or call 1-877-307-9313.**

Government Access

| | |
|---------------------------|-----------------|
| City Hall Office: | 895-9444 |
| Code Enforcement: | 899-2512 |
| Police Department: | 893-9000 |
| City Engineer: | 899-2518 |
| Public Works: | 899-2517 |
| Property Taxes: | 899-2511 |
| Police Records: | 899-2537 |

Anonymous Tip Line:
498-CLUE
(2583)
Emergency: 911