



St. Matthews Living

City of St. Matthews
3940 Grandview Avenue
P.O. Box 7097
St. Matthews, KY 40257-0097
Hours: M-Th 7 a.m. - 4 p.m.
F 7:30 - 11:30 a.m.

AUGUST 2020

COVID-19 Crisis & Recent Protests Highlight St. Matthews Fire & Police Partnership

The COVID-19 pandemic has raised community heroes and struck down loved ones. The crisis has also showcased the strong partnership between the St. Matthews Police Department and St. Matthews Fire & Rescue.

Like so many in our community, both agencies dealt with COVID challenges early on in February and March. Police officers continued working without going to City Hall for roll calls with other officers. They worked from their patrol cars, using their car computers rather than going into the police station. Firefighters were unable to allow visitors or vendors into the stations. Fire command staff and administrative personnel worked from home or on limited work schedules.

"Some of the most difficult responses were to those who needed medical help and transport for the COVID virus," said Fire Chief Bill Seng. "Our firefighters and EMTs responded knowing they could contract the virus and that they risked bringing it home to their families. Of course, we took all precautions, putting the stations

on lockdown and sterilizing our equipment and stations daily."

These strains continued to take a toll when protests began in April following the death of Breonna



Taylor just weeks earlier. After several long nights of officers patrolling and firefighters preparing for the worst, Police Chief Barry Wilkerson and Fire Chief Bill Seng formulated a plan. All available off-duty police and extra firefighters, EMTs, and paramedics were deployed each

night and during specific days, depending on the situation. The fire battalion chief coordinated with police command about positioning, staffing, and logistics.

St. Matthews Fire & Rescue assigned a paramedic to the St. Matthews Police Special Response Team to provide medical care for police during the protests. Extra medical crews and ambulances were reassigned and staged off Shelbyville Road at fire station #1.

"St. Matthews Police Department has always had a great working relationship with the Fire Department," said SMPD Police Chief Barry Wilkerson. "Before the protests we have worked together in special response situations, where they have a medic embedded in our team. This benefits not only civilians who may be injured during these crisis situations, but also any police officers who may be injured on the job. Seconds can matter."

Chief Seng echoed Chief Wilkerson's words. "It is always great to work with the police department and the protests

Continued on page 11

A Message From...

City Hall Open

City Hall is now open to the public after being closed for several months due to the COVID-19 pandemic. If you wish to visit City Hall, you will be required to have a temperature check upon arrival. All visitors MUST wear a mask at all times while in the building.

Balanced Budget Passed

The City has passed a balanced annual budget of \$14,294,891 in the General Fund, and \$1,044,000 in Municipal Aid Program funds as required by law. Due to the COVID-19 pandemic, the City Council will

review the budget later in the year when more revenue has been collected. At that time, the council will amend the budget as needed.

KEEP UPDATED

All residents are encouraged to visit the Current Events and Notices page on the City's website for changes regarding community events and for updated City news between newsletters.

Vehicle Sticker Available

The City distributed a new St. Matthews vehicle sticker with tax bills in 2019. Additional

stickers are available free at City Hall. Show your support and pride for our City by displaying the sticker on your vehicle.



Hometown History 1965

This feature spotlights a moment in time when our city looked a lot different. Where do you think this picture was taken? See page 11 to solve this issue's Hometown History mystery.



Louisville Gas & Electric

502-589-1444

Fast path options are: 1-1-1 (gas) and 1-1-2 (electric).

Emergency Contact Numbers

Louisville Water Company

502-583-6610

To report emergencies like water main breaks or broken fire hydrants.

Easy Being Green



Electronics Disposal

Acceptable electronic items for the Louisville Metro CyberCycle program include television sets, microwaves, computers, scanners, printers, monitors, tape and disk drives, electronic game systems, VCRs, CD players, digital cameras, copiers, cell phones, CDs, and floppy disks.

For more information, times and locations, please go to the following site:
<http://louisvilleky.gov/government/public-works/electronics-recycling>.

Paint Disposal

Recycle oil based and lead paints through a HAZ BIN disposal program run by the Metro Solid Waste Management Department. HAZ BIN is available to all residents of the Louisville/ Jefferson County Metro area. It provides a safe and convenient way to dispose of unwanted household hazardous materials that are not accepted by household garbage collection or recycling centers.

Latex paint can be disposed of at the time of your normal scheduled trash collection. Paint in the can should be dry. Remove the lid and let paint dry in a safe area out of the reach of children and pets. To absorb excess paint, stir in cat litter, sand, paper shredding, or

saw dust. For a full list of products accepted, locations, and collection hours, go to the following site:
<https://louisvilleky.gov/government/public-works/latex-paint-recycling>.

PLEASE NOTE



Mattresses, box springs, and upholstered furniture **MUST BE** wrapped in plastic for disposal. Mattresses, box springs, and upholstered furniture will not be collected with your regular pickup. You **MUST** call Rumpke to schedule a pickup.



Recycling is collected every other week on the same day as trash on weeks highlighted in red. Holidays are marked in blue and will delay recycling and trash one day.

August 2020						
S	M	T	W	T	F	S
						1
2	3	4	5	6	7	8
9	10	11	12	13	14	15
16	17	18	19	20	21	22
23	24	25	26	27	28	29
30	31					

September 2020						
S	M	T	W	T	F	S
		1	2	3	4	5
6	7	8	9	10	11	12
13	14	15	16	17	18	19
20	21	22	23	24	25	26
27	28	29	30			

October 2020						
S	M	T	W	T	F	S
				1	2	3
4	5	6	7	8	9	10
11	12	13	14	15	16	17
18	19	20	21	22	23	24
25	26	27	28	29	30	31

Police Beat

National Night Out Rescheduled

The planned August National Night Out event has been canceled and rescheduled for October 6, 2020 due to the COVID-19 pandemic. Please check the City website for updated information closer to the rescheduled date.

Grant Funds Used

The funds from the Kentucky Office of Highway Safety Grant will be used through the end of September to focus on speed-ing and impaired drivers.

Prescription Drug Box Reopens

Prescription drug disposal box has reopened in the St. Matthews Police Department Monday–Friday, 8:00 a.m.–4:00 p.m. Residents wishing to make a deposit in the drug disposal box must follow these simple steps:

- Bring prescription drugs in their original containers.
- Place the drugs in a plastic bag provided by SMPD.



- Drugs should not include over-the-counter medications.
- Deposit should not include liquid medicines, inhalers, creams, lotions, patches, or needles. Please contact your physician's office or pharmacy for the proper disposal of these items.



Share the Road with Bicyclists

On most roads, bicyclists have the same rights and responsibilities as vehicles, but bikes can be hard to see. Children riding bikes create special problems for drivers because usually they are not able to properly determine traffic conditions. The most common cause of collision is a driver turning left in front of a bicyclist.

- When passing a bicyclist, proceed in the same direction slowly, and leave 3 feet between your car and the cyclist.
- When turning left and a bicyclist is approaching in the opposite direction, wait for the rider to pass.
- If you're turning right and a bicyclist is approaching from behind on the right, let the rider go through the

intersection first, and always use your turn signals.

- Watch for bike riders turning in front of you without looking or signaling; children especially have a tendency to do this.
 - Be extra vigilant in school zones and residential neighborhoods.
 - Watch for bikes coming from driveways or behind parked cars.
 - Check side mirrors before opening your door.
- By exercising a little extra care and caution, drivers and pedestrians can co-exist safely in school zones.

Bicycle Helmet Safety

All bike riders should wear bicycle helmets. Each year in the U.S., about 800 bicyclists are killed and another 500,000 end up in hospital emergency rooms. Two out of three deaths involve the head and face.

As important as wearing a helmet is making sure it fits properly. Make sure when the chin strap is buckled that you cannot move the helmet from side to side or up and down. It should sit level on the head and rest low on the forehead. The bottom edge should be 1 to 2 finger widths above the eyebrow. The straps of the helmet should form a "Y" that comes together at the bottom of the earlobe. When opening your mouth, you should be able to feel the helmet pull down on your head.

Crime Buzz

Fingerprinting Available

Fingerprinting Services are available again at the St. Matthews Police station. For now, the service is by appointment only Monday–Friday from 9:00 am.–3:00 p.m. Contact the SMPD front office to schedule at 502-899-2537.

The cost of fingerprinting is \$10 per card. Payment must be made by check, money order, or exact



change. Credit cards and debit cards are not accepted.

Residents should bring their own cards for printing.

Free House Watch

SMPD provides free house watches for residents on vacation or at other times residents must be away from home. To learn more about how this works or to schedule a free house watch, telephone SMPD at 893-9000 or fill out the online form on the City website at www.stmatthews-ky.gov.

ID This Person

If you believe you can identify a person involved in criminal activity, check out Idthisperson.com. New images are posted every day of unidentified suspects. Anonymous tipsters who help identify criminals may receive a \$25 reward.



MSD Asks Residents to Drain Pools Safely

The Labor Day holiday weekend traditionally marks the closing of swimming pools. Many people begin to drain their pools to prepare for winter as the sun-drenched summer days come to a close. However, it's important for residents to be aware of how to properly drain their pools so they don't harm Louisville waterways or cause headaches for neighbors.

The chlorine in swimming pools that protects humans from harmful bacteria goes right into the creeks, streams and rivers of the community and can kill some species of recently hatched fish and make it hard for other aquatic life to breathe. The average pool has a chlorine concentration that is 10 times higher than some aquatic life can withstand. When chlorinated water is drained into storm drains, streets or gutters, and heads to local streams, harmful byproducts are produced

that are highly toxic and carcinogenic.

Louisville Metro Sewer District (MSC) experts recommend that a pool sit for at least 10 days after chemical treatment before draining any water. The recommendations apply to both above and in-ground pools.

Improper draining can also lead to backed up basements and flooded yards. There are three ways MSD experts recommend draining a residential pool — draining to a grassy area such as your yard if the yard is large enough to absorb it, draining directly into the sanitary sewer system if a direct connection is available, or using a pump and hose to connect to a toilet, bathtub or floor drain on the property to drain into the sanitary sewer system. Water must be discharged slowly, at no more than 30 gallons per minute.

Residents should never discharge water to the stormwater system, such as with catch basins or the street, because this water directly reaches a natural body of water and is not filtered.

Other guidelines include:

Do not drain your pool during or up to 48 hours after a rain event
 Drain just one pool at a time.
 Test the pool water to ensure that it is essentially chlorine-free prior to draining (about 0.1 parts per million total chlorine). Bubbling, cascading, or other forms of aeration will help to remove chlorine from water. The pool's pH should be in a normal range of 6 to 8 prior to draining.



Hot Off the Press

Award Received for Pediatric Training

St. Matthews Fire & Rescue received the Award of Excellence designation for 2020 from Kentucky EMS for Children (KYEMSC).

KYEMSC works to decrease pediatric mortality and morbidity due to severe illness or injury by enhancing pediatric emergency care services throughout Kentucky.

"Children make up a small number of the patients we see in EMS. While that is clearly a good thing, it also means we have less direct experience in meeting their unique needs. EMS providers must make a



deliberate effort to remain proficient in caring for children," said KYEMSC Project Director Morgan Scaggs. "These agencies have demonstrated that they are committed to improving emergency pediatric care and they are raising the bar for everyone."

To be recognized, an agency must designate a pediatric emergency care coordinator to ensure integration of the unique needs of pediatric patients into all aspects of emergency care, comply with national

recommendations for pediatric equipment carried on the ambulance, and engage in pediatric-focused community outreach activities. There are also requirements for pediatric-related continuing education and annual demonstration of pediatric skill competency for all EMTs and paramedics.

Tracy Jevning, a paramedic with St. Matthews Fire & Rescue since 2016, is its pediatric emergency care coordinator (PECC). "Training in pediatric emergency care is not something a lot of fire departments do, but we have a very supportive command staff that believes in going above and beyond what is required,"

said Tracy. Besides funding the specialized training, the department has purchased pediatric equipment to provide for the safe care and transport of younger patients.

As PECC, Tracy has trained both St. Matthews Fire and EMS personnel in using the new equipment and to follow the recommended guidelines. "I think we all get an extra adrenaline rush when we know we will be taking care of a child," said Tracy. "It's good to know that we will be specially trained and have the equipment to meet the need if it arises."

Fall Safety Tips

As summer turns to fall, it is time to turn our minds to fire safety in the home.

Time Change Means Battery Change

Get in the habit of changing the batteries in your smoke detectors and carbon monoxide detectors every fall and spring



when changing the clocks for Daylight Savings Time.

This is also a good time to verify that all fire extinguishers are fully charged and in working order.

Home Heating

It is important to make sure your heating devices and systems are in good working order before you experience the first cold snap of the season.

Get your central heating system cleaned, inspected, and serviced by a certified heating, venting, and air conditioning contractor every year before using it. If you have a gas heater, make sure that you have fully functioning carbon monoxide detectors installed in your home.

Get your chimney inspected each year to make sure that it is safe and repair any cracks in fireplaces. Hire a chimney sweep to clean out your chimney every fall.

These simple precautions can keep your family safe.



St. Matthews-Eline Library: Check it out!

Curbside Materials Pickup

St. Matthews Eline Library is offering curbside materials pickup Monday–Friday, 10:00 a.m.–4:00 p.m. Patrons who currently have items on hold must call (502) 574-1611 to schedule a pickup time. The library has begun to fill new requests, but because of reduced staffing levels due to the economic impact of COVID-19, there may be delays in fulfilling your requests. For quicker service, select books already housed at your preferred Library branch since moving books between locations will result in a delay in service.

After your pickup is scheduled, come to the library and park in one of the numbered spots. Call the phone number on the sign and provide your name and library card number. Remain in your car with the windows up. Staff will bring your materials out

and place them in your trunk. If you walk to the library, call the phone number on the sign, and staff will place your materials on a table for pickup.

Returning Materials

You can return materials in the book drop during open hours. The book drop will be locked Friday at 4 p.m. and reopen Monday at 10 a.m. All book drop items will be quarantined for 3 days before being processed.

Summer Reading Program

To complete the Summer Reading program, register and log books at www.lfpl.org/summerreading. You can also register and give a list of books over the phone by calling 502-574-1611.

To pick up prizes for the program, go to the library

branch during curbside hours, park near or walk up to the sign marked “Prize Pick-up,” and call the number listed on the sign. Library staff will bring your Summer Reading prize to your car. To view available prizes, go to <https://www.lfpl.org/kids/prizes/>.



Good Neighboring

Make House Numbers Visible

Make sure that your house number is visible. Numbers that are too small or placed in out-of-the-way corners make it difficult for first responders to get to you when there is an emergency. Along with police and fire emergencies, we have added



COVID-19 to our medical emergencies, and time can make all the difference in life or death situations.

Clear Sidewalks

Please keep the sidewalks adjacent to your property free and clear of any obstructions. Whether it be a car parked over the sidewalk or personal items left blocking the pedestrian's thoroughfare, obstructing the sidewalks is prohibited by the City and make it difficult, if not impossible, for those who are handicapped to negotiate pathways.

Monitor Your Dog

When you take your dogs for a walk, please make sure you pick up after them. Take doggy waste bags on your walk with Fido so you are not caught unprepared. No one appreciates stepping in dog waste and picking it up is required by the City.



Also, if you have a dog that barks incessantly at night or early in the day, take steps to silence him for the sake of your neighbors.

Your Works at Work

The full Works crew is back together working every week and is catching up from the setbacks of the COVID-19 pandemic. Since the last newsletter, the following has been accomplished:

Completed Projects

- Performed checks and maintenance on all irrigation systems.
- Planted approximately 125 trees in public rights-of-way, common green spaces, and parks.
- Replaced street signs in the Camelot area.

- Repaired sidewalks on Highcliffe and Winchester.
- Patched potholes on many City streets.
- Replaced flooring and installed new wood baseboards on the first floor of City Hall.
- Installed automatic door openers at City Hall's east and west entrances.

Current Projects

- Finalizing plans with MSD for a drainage project between Kentucky and Washburn — construction anticipated summer of 2020.

- Constructing drainage improvements on Massie, Winchester, and St. Germaine.
- Designing culvert replacement in Trinity Hills—slated for construction in September.
- Improving audiovisuals and Council desk in City Council Room.

Future Projects

- Drainage and Roadway improvements along Sears.
- Improvements to Community Center Building.
- Stream improvements in Draut Park.

Code Words

We have found that many St. Matthews residents are confused about their responsibility for maintaining right-of-way areas adjacent to their property. A right-of-way is any city land designated for a road or alley, whether it be improved (surfaced), unimproved (vegetation only), or a utility easement. Utility easements are a part of your property upon which an electric, gas, telephone, water, drainage, or sewer utility company has been granted the right to locate their facilities.

Whether or not any utility facilities exist on an easement, the property owner adjacent to

a right-of-way area, must maintain that area free of high grass, weeds, excessive vegetation, debris, structures, etc. If, for example, your property adjoins an alley that has not been surfaced and is just vegetation, you are



responsible for maintaining your half of the alley. Any improved portion of an alley is maintained by the City, with

the unimproved portion being maintained by the adjoining property owner.

If you have questions about whether or not you adjoin an easement or right-of-way or about the width of an easement, alley, or other right-of-way, or about your responsibilities for upkeep, you may contact Code Enforcement, Public Works, or the City Engineer at 502-895-9444.

To view the Code, go to https://code.library.amlegal.com/codes/stmatthews/latest/stmatt_ky/. See chapters 92 and 94 under Title IX: General Regulations.

Park Place

Bathrooms Open; Play Equipment Closed

With limited access to workout facilities due to the COVID-19 pandemic, many St. Matthews residents and visitors have turned to the City's parks to get out of the house, grab a breath of fresh air, and get some exercise. In addition to the often visited Brown Park, the City has three other parks—Community Center Park, Draut Park, and Warwick Park—each with its own unique characteristics and uses.

All park restrooms, which were closed earlier this year due to the pandemic, have been reopened with the permission of the Governor and state health officials. City of St. Matthews employees are cleaning the restrooms daily; however, the public is advised to take precautions when using these facilities as it is not possible to clean them after each use and visitors may come into contact with the COVID-19 virus.

Play equipment in the City parks is still closed to use as it is not possible to continually clean the surfaces sufficiently during and after the play of each child. The Governor and state health officials have determined the risk of spreading the COVID-19 virus is too high, as it could easily be transferred from child to child when they touch the many



surfaces of the play equipment.

The City of St. Matthews is counting on park visitors to uphold its decision to close the play equipment for the safety of our children and others they may come into contact with. Until such time as the Governor and state

health officials allow the opening of play equipment, visitors may enjoy the other amenities in the parks.

Bread Harmful to Ducks

The ability to feed and interact with the ducks in Brown Park has drawn many visitors there. For the health of the ducks and Beargrass Creek, the City is asking visitors not to feed the ducks

bread. Instead, feed the ducks certain foods that are not harmful to their digestive tracks and which don't pollute the stream. The City is exploring installing dispensers containing food specifically designed for ducks that

patrons can purchase for a nominal fee. Meanwhile, the City's Works Department will be installing signs close to Beargrass Creek asking patrons not to feed bread to the ducks.

COVID Testing Site Needs Volunteers

Remote Area Medical (RAM) is organizing volunteers, ages 18–65, to fulfill non-clinical roles at the 2020 Bashford Manor Lane COVID testing site. The site is open Monday–Friday, 7:00 a.m.–6:00 p.m. The site needs 5-6 volunteers per day to help with traffic control and shuttling supplies around to the medical personnel that will be there. The positions are all non-contact with patients and the needed personal protective



equipment will be provided. All volunteers must have a background check.

RAM organizer Kathi Hofstad said, "We are a non-profit that

normally organizes free dental, vision, and medical clinics, but due to COVID-19, those have been put on a hold. In the meantime, we have been asked to help recruit volunteers for COVID19 drive-thru testing sites."

To volunteer, go to <https://www.ramusa.org/covid-19-volunteer/> and register. Then watch for an email with a link for a background check and submit it promptly.

Hero's at Heart Luncheon on October 16



On October 16 SeniorCare Experts will hold its Hero's at Heart luncheon, honoring the volunteers who support the

organization's programs for seniors. Three leaders from the community will also be recognized in the following categories: Ambassador for Seniors, Bridging the Gap, and Compassionate Heart. To purchase tickets, submit nominations, or for sponsor-

ship information, please call 502-896-2316 or email info@srcareexperts.org by September 11.

SeniorCare's holiday food drive begins November 30 and runs through December 15. Details will be in the next newsletter.

St. MAM Holds Back-To-School Drive, Golf Classic



Back-to-School Drive

St. Matthews Area Ministries (St. MAM) has been working hard during the COVID crisis to provide a safety net for those in need in St. Matthews. From March through May, St. MAM's services to the community increased more than 35%. As a small non-profit, St. MAM depends on the support of the community for staffing, volunteers, goods, and finances. Please donate your

time and resources generously.

One of the ways we support those in need is by hosting an annual Back-To-School supplies drive. The following items are most needed: washable markers, composition notebooks (various colors), college-ruled loose-leaf paper, glue sticks, and pencils. As St. MAM distributes school supplies year-round to families in need, it still has a sufficient inventory of other items.

If you are uncomfortable shopping, please feel free to use St. MAM's Amazon wish list. While logged into [www.](http://www.smile.amazon.com)

[smile.amazon.com](http://www.smile.amazon.com), select St. Matthews Area Ministries as your charity of choice. Shopping for charitable gifts at AmazonSmile increases your gift since 5% of what you pay goes to the charity along with the items you purchase.

Golf Classic rescheduled for October 5

St. MAM's annual Golf Classic at the Wildwood Country Club has been rescheduled for October 5. Delayed twice from May, go to <https://app.eventcaddy.com/events/st-mam-golf-classic> for sponsorship information and to register.

Sign Up for Reach Alert Notifications



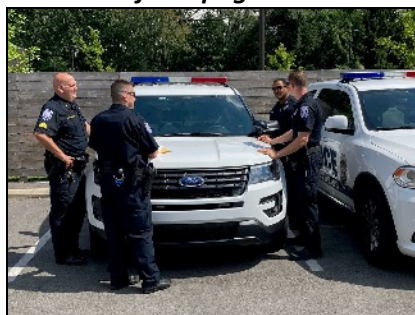
If you have not signed up to receive information through Reach Alert about events or situations that may affect St. Matthews, the current pandemic makes it more

important than ever that you do so. You may register to receive information via multiple formats. Go to www.reachalert.com and click on the blue text, "Create an account." When prompted, use the following information to register: Network Name – St. Matthews (city); Role –

Resident or Business; and Address – enter your address in the first box and your street name in the second box. Creating this account gives you another way to stay connected at a time when you may be feeling isolated. Take a few moments to sign up today!

Fire, Police Partnership

Continued from page 1



allowed us to meet even more SMPD officers. This can only strengthen our already fine working relationship,” he said.

While most of the protests at “Gilman’s Point” were very peaceful, they took a toll on the first responders. The group of protesters grew in number throughout the first week as word spread of the first group’s efforts. The daily protests ended each night at 8 p.m. with

most everyone safely returning home.

What most residents didn’t know was that during these peaceful protests another group of protesters was circling Louisville in approximately 200 vehicles. These vehicles touched on the borders of St. Matthews while traveling throughout the Metro area causing traffic slow-downs and unsafe conditions on many area roads.

Said Chief Wilkerson, “Because Mayor Tonini kept the curfew during that time, it made it easier

to keep order in the City.

Despite the increased stress of the COVID pandemic and the protests, Chief Seng said his team remains upbeat, adding, “They do their jobs with smiles on their faces.”

Next time you see firefighters or police officers, give them an extra reason to smile by saying thank you for their 24-hour response to the residents, visitors, and businesses of St. Matthews and for the outstanding partnership of City services.



Hometown History - 2020

THEN

The photo of the St. Matthews Fire Department from page 2 was taken in 1965 when the station was located on St. Matthews Avenue. Today, St. Matthews has 3 fire stations, located at 240 Sears Avenue, 4400 Brownsboro Road, and 8126 LaGrange Road.

NOW

The building on St. Matthews Avenue now houses SteelCity Pops, which sells gourmet, all natural popsicles, and Quills Coffee, a local coffee house.



City of St. Matthews
3940 Grandview Avenue
P.O. Box 7097
St. Matthews, KY 40257-0097

STD PRST
U.S. Postage
PAID
Louisville, KY
Permit #976



ST. MATTHEWS

Your Elected Officials for the City of St. Matthews:

Mayor Richard J. Tonini

City Council

Bernard Bowling

Cathi Clark

Frank Flynn

Tim Holland

Stuart Monohan

Mary Jo Nay

Amy Olson

Tony Weiter

City Council meetings begin at 7 p.m.
on the second and fourth Tuesday of
each month.

City Council meeting minutes are
online at www.stmatthewsky.gov.

Reach Alert

**To receive emergency
and/or community
service notifications
through St. Matthews'
Reach Alert system,
sign up at
www.reachalert.com
or call 1-877-307-9313.**

Government Access

City Hall Office:	895-9444
Code Enforcement:	899-2512
Police Department:	893-9000
City Engineer:	899-2518
Public Works:	899-2517
Property Taxes:	899-2511
Police Records:	899-2537

Anonymous Tip Line:
498-CLUE
(2583)
Emergency: 911