



St. Matthews Living

City of St. Matthews
3940 Grandview Avenue
P.O. Box 7097
St. Matthews, KY 40257-0097
Hours: M-Th 7:30 a.m. - 4 p.m.
F 7:30 -11:30 a.m.

FEBRUARY 2016

New Public Works head familiar with City

When Kenan Stratman was hired as Public Works Director and Assistant City Engineer last April, he was no stranger to the City of St. Matthews. For most of his 14 years as the Civil Site Section Manager for HDR, an engineering consulting firm, he designed and directed projects for St. Matthews.

While at HDR, Stratman designed upgrades to little league fields at Community Park and designed playground and parking lot improvements at Warwick Park. He was involved with 10-15 drainage improvement projects, in charge of designing Holtzheimer Park, and established the railroad quiet zone for St. Matthews.

Stratman also managed the design of the bathroom/pavilion/concession stand at Community Park and designed and managed other improvements there such as a rain garden, pedestrian bridge installations, and additional walking trails. Just prior to coming to St. Matthews, Stratman completed the design on the additional parking lot,

Weinberg Field, and Ten Pin Lane improvements. Working for the City this past year, Stratman oversaw the construction of those improvements. "It was very satisfying to see it from

Community Park. He also maintains St. Matthews' Municipal Separate Storm Sewer System (MS4). "MS4 compliance allows St. Matthews to be in charge of its own storm sewer

system," said Stratman. "We have to abide by a nationwide permit and are co-permit holders with MSD."

This Paul Bunyan-sized job could not be done without the 16 workers Stratman oversees. "This is a group of enthusiastic people who take pride in what they do and love coming to work for St. Matthews," he said. "They are determined people -- they know their job and are determined to do it and do it right."

As for the next 14 plus years, Stratman is working toward bringing the City into ADA compliance, which includes making sidewalks safe for all residents. Other long-term goals include beautification and



Public Works Director and Assistant City Engineer Kenan Stratman, Terry Ridgeway, David Hill, and Moe Hibbard assist Operation Brightside with St. Matthews' flower bed area at Westport Road and the freeway.

beginning to end, not only as the designer but also as the owner," he said.

As the City's Public Works Director, Stratman has taken charge of the American Disabilities Act (ADA) projects as well the stream restoration at

Continued on p. 11

A Message From...

As part of a continual effort to reassess and reduce City expenses, the City recently inspected its street lights to ascertain their working condition. Louisville Gas & Electric charges the City of St. Matthews a monthly fee for each street light, whether it is working or not.



Of the 1,200 street lights in St. Matthews, Project Manager Will Clark found that 91 were not lighting, had globes that were not firmly affixed, or were missing electrical plate covers, among other issues. LG&E has been asked to address the issues.

To report an out-of-service street light or one that needs

attention, telephone LG&E's Outdoor Lighting Department at 502-589-3500 or use the Call St. Matthews 24/7 information system at 638-4STM (4786), options 2-4. The mayor and City councilmen want to ensure that St. Matthews residents are receiving the benefits for which they are paying.

St. Matthews properties to be assessed in 2016

The Property Valuation Administration is in the process of re-assessing property in Jefferson County. St. Matthews properties will be reassessed this year. Since PVA has reduced its field

staff from 13 to 7, satellite technology will be used to view many properties.

Those wishing to make an appeal regarding their assessment may do so in April

via a link on the PVA website at jeffersonpva.ky.gov. The appeal may also be made during that time at the PVA office located at 815 West Market St., 4th Floor, in the Glass Works building.

Sign up for Reach Alert

Signing up for Reach Alert, the City's instant communication system, takes only a few minutes and is free. Through Reach Alert, residents are made aware of emergency situations or unsafe conditions,

as well as community service notifications if requested.

Notification options include text, email, and/or phone. The City does not expect to send out messages daily, but only as situations dictate.



Sign up online at www.reachalert.com or by calling 1-877-307-9313. A link may also be found on the City's website at www.stmatthewsky.gov.

Hometown History 1950

Click the heels of your Saddle Oxfords three times and go back to this scene in 1950. Know where you are? See p. 11 to solve this issue's Hometown History mystery.



Easy Being Green



Review what is recyclable

Items currently being accepted in the St. Matthews

recycling program are: plastic bottles , milk and juice jugs, cartons , laundry detergent bottles, aluminum cans, steel and tin cans, glass bottles and jars, paperboard boxes , newspapers, flattened cardboard, paper bags, carrier stock (soda and beer cases), mail, magazines, mixed paper, and telephone books.

For more detailed information and to view a video of what happens to your recycling after it is picked up, go to stmatthewsky.gov/sanitation-recycling/ and click on “The Story of Rumpke”.

Fans save on utilities

Use ceiling fans to push warm air down (clockwise) in the winter to help with heating and reverse the direction (counterclockwise) to cool rooms in the summer. For

more information, go to EnergyStar.gov/productfinder/product/certified-ceiling-fans/results.

Tree mulching

Don't mound mulch into volcano-shaped piles against the trunks of trees and shrubs. Mounding mulch causes existing surface roots to suffocate and new roots to grow inward, potentially strangling the tree. It also softens the bark of some trees, inviting insects to invade. The constant trapped moisture will eventually kill the tree.

Instead, spread the mulch 3 to 4 inches deep in a circle at least 3 feet in diameter around young trees and shrubs. Brush away mulch at the center of the circle so that it is several inches from the base of the tree. This will allow the tree to stay healthy while suppressing weeds and retaining soil moisture.

Before you dig

Call 811 at least 3 days before you dig to give local utilities time to

mark the underground lines. The service is FREE.

Rx drug disposal

Since the prescription drug disposal box was installed just over 18 months ago, the City has collected 2,009 pounds of medication. That’s over a ton! These drugs are burned in a specially designed device by police personnel in an undisclosed location, thus keeping harmful contaminants out of the soil, ground water, and streams.

To dispose of unused medications, place tablets or capsules loosely in a plastic zip lock bag. Dispose of the prescription bottle at home, remembering to remove the label with your personal information. If you do not have a plastic zip lock bag, you may get one at the Police Department window, just inside City Hall. No needles or liquids are accepted.





Recycling is collected every other week on the same day as trash on weeks highlighted in red. Holidays are marked in blue and will delay recycling and trash one day.

February 2016						
S	M	T	W	T	F	S
	1	2	3	4	5	6
7	8	9	10	11	12	13
14	15	16	17	18	19	20
21	22	23	24	25	26	27
28	29					

March 2016						
S	M	T	W	T	F	S
	1	2	3	4	5	
6	7	8	9	10	11	12
13	14	15	16	17	18	19
20	21	22	23	24	25	26
27	28	29	30	31		

April 2016						
S	M	T	W	T	F	S
					1	2
3	4	5	6	7	8	9
10	11	12	13	14	15	16
17	18	19	20	21	22	23
24	25	26	27	28	29	30

Police Beat

The St. Matthews Police Department is upgrading its computers to remain compatible with Louisville Metro's emergency system.

MetroSafe, Louisville's emergency communications center, has added Computer-Aided Dispatch software to its computer network. The program allows messages to be dispatched through a computer to an emergency vehicle's mobile data terminal (MDT). The computer provides displays

and tools that allow the dispatcher to handle calls for service as efficiently as possible by allowing the dispatcher to view the status of all units being dispatched at a glance.

Both SMPD's dispatch center computers and MDTs are being upgraded with the new software and 11 new MDTs are being purchased. The upgrade will allow SMPD officers and dispatchers to communicate



smoothly with the Louisville Metro Police Department.

The terminals will be purchased with "Forfeiture Funds". These funds are monies awarded to the SMPD upon conviction of criminals arrested in crimes within the City and surrounding areas, as opposed to general funds generated from city taxes. Who says crime doesn't pay?

Crime Buzz

Prevent crime at gyms

Have you joined a gym as part of your New Year's resolution to become healthier? Add to your resolutions a commitment to crime prevention.

Theft is a crime of opportunity, so most things stolen have been left unattended in plain sight in a private place. If you go to the gym:

- Leave personal items of value at home or keep them on you at all times.
- Use a lock on your gym locker.
- Never leave your bags, purses, wallets, or any other possessions unattended even for a moment.
- Be aware of your surroundings when you get to the parking lot and

report any suspicious activity.

- Keep a written record of valuables, including descriptions and serial numbers. These are proof that the property is yours and will aid in the reporting process and recovery.
- Always report missing or stolen property immediately.

Neighborhood safety

- Stop signs and speed limits are not optional; observe all traffic signs.
- Keep cars locked, even in your own driveway. Do not leave valuables in plain sight in your vehicles. Don't leave cars running unlocked and unattended in cold weather to defrost windows or heat the car.

- Given that it gets dark so early, keep porch lights on or put them on motion detectors to deter thieves and keep the area safe.

Busting money wire scams

Scammers often prey on senior citizens. In a current popular scam, a caller poses as a young relative who says he is in trouble and needs you to wire money right away. The person often urges you not to tell anyone because he is embarrassed.

Any time a stranger on the phone asks you to wire money, it's a con—even when someone claims to be family. If you are not sure the call is a scam, simply hang up and call the relative in question. Chances are he's not in jail. You can also ask the caller for the name and

Continued top p.5

Crime Buzz

Continued from p. 4

location of the jail from which he is calling. Call the jail to see if your loved one is there.

According to the FBI, this scam also happens by e-mail. If you receive an e-mail asking for money to be wired for a relative, always verify information directly with your family before responding. If you have been victimized, report the facts to

your local law enforcement agency.

Free house watch

St. Matthews Police Department provides house watches for residents on vacation or who must be away from home for other reasons. This service is free to all residents. Just telephone SMPD at 893-9000 to schedule.

SMPD Anonymous Tip Line

If you have seen something suspicious, you can alert the police anonymously by calling 498-CLUE (2583), Option 1. To report a crime in progress, call SMPD directly at 893-9000. You do not have to give your name.

City Attorney Haunz retires



City Attorney Foster Haunz is retiring after representing the City of St. Matthews for nearly four decades.

Regarding Haunz' service to the City, St. Matthews Mayor Rick Tonini commented, "For 40 years Foster served us well and gave us great advice." Tonini noted that

Haunz was considered to be one of the best municipal lawyers in the state.

A graduate of Notre Dame Law School, Haunz has done business in Jefferson County's district and circuit courts, in the 6th Circuit Court of Appeals, and, in 1972, was admitted to practice before the Supreme Court of the United States.

Since 1977, Haunz has worked for the City of St. Matthews defending the City against claims, drafting City ordinances and contracts, and collecting delinquent taxes.

Looking back, Haunz said he found his greatest satisfaction in

overseeing annexations that added to St. Matthews both commercially and in population. Though he will retire as City Attorney, Haunz will continue to work from home on limited basis. "The extra time will give my wife and I more time to travel, which we both enjoy," he said.

City Councilwoman Martha Schade said Haunz was one of a kind and will be missed. "I've known Foster a good many years, and I think he's one of the best in his field," she said.

Haunz is serving on the City's committee to hire a new attorney. Interviews were held in January.

Architect hired for possible expansion



The City has hired Studio Kremer Architects to assess St. Matthews' government

facilities. The firm will explore expanding the library and assess the usage of space in City Hall for both government operations and community groups. It will also look at the grounds surrounding the building and consider flow of

vehicle, bicycle, and pedestrian traffic.

The City estimates it will make a decision concerning the redevelopment of the City Hall campus by August.

Park Place



Significant progress has been made on the Community Park stream restoration project. The contractor has completed construction along the two upper branches of the stream channel that flow through the

park, which is located behind the Community Center off Ten Pin Lane. This included constructing boulder toes to improve the stream channel and to protect the outer streambank from erosion. Structures that were put in place will improve aquatic habitats and protect the pedestrian bridge from erosion.

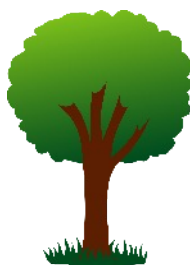
The project will be substantially complete by the end of this month with some minor landscaping and

tree and shrub planting being done in March, weather permitting. Once the project has been completed, the park will be opened for the community to enjoy.



Get a Free Tree

Residents may request a free tree to be planted along the front of their property by calling City Hall at 895-9444 or filling out the Contact Us form on the city's website at www.stmatthewsky.gov. Over 1,600 trees have been planted with the species varying each year.



St. Matthews Baseball & Softball

Bambino Buddy Ball



For the second year, St. Matthews Baseball and Softball is offering Bambino Buddy Ball for ages 5-20. The division allows special needs athletes to develop confidence and build self-esteem as they participate in organized sports with the help of a buddy. The program provides a way for these kids to be part of organized sports and assists with

physical fitness as well as social skills.

The program needs buddies to help these athletes. The joy and emotion you experience when you put that first baseball cap on a challenged child's head is like no other. For more information, contact Bo Phillips at 645-8689 or bophillips@bellsouth.net.

Opening Day Parade

This year's Opening Day Parade will take place Saturday, Apr. 16, at 8 a.m. The parade will begin at St. Matthews Baptist Church and conclude at McCandless Field at the Community Center Park with opening ceremonies. Ages 4 through 12 will be represented with a float for each team. See stmatthewsbaseballandsoftball.com for more information.

Seasons Greetings

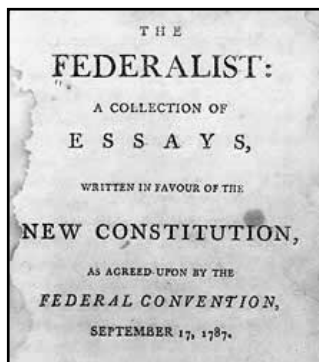
Alexander Hamilton Historical Society of Kentucky

The Alexander Hamilton Historical Society of Kentucky meets on the second floor of the St. Matthews - Eline Library, 3940 Grandview Avenue. All meetings are open to the public. Upcoming meeting topics include:

Feb. 20

AHHS will sponsor a symposium at Bellarmine University's Cralle Theatre at 10:30 a.m. William E. Thro, General Counsel and Adjunct Professor of Law at the

University of Kentucky, will speak on "The Will of the



People, Will of the People's Agent, or the Will of the

Judges," an allusion to Hamilton's Federalist #78. Please note the location change for this month only.

Mar. 19

AHHS member Ann Durbin will review *The Founding Mothers* by Cokie Roberts.

Apr. 16

AHHS member Jack Brammer, correspondent for the Lexington Herald, will review the book, *Thomas Paine*.

The Woman's Club of St. Matthews



The Woman's Club of St. Matthews meets at the St. Matthews Community Center on 2nd and 4th Mondays from September through May at 11:00 a.m.

For more than 75 years the purpose of the Woman's club

has been to promote social, charitable, educational and cultural activities and to foster community improvement.

We welcome any woman who wants an opportunity to exchange ideas and form lifelong friendships, through

learning and opportunities for the welfare of children, senior citizens and our community.

For information about the club, call its president, Bev Potts, at 896-6575, or its vice president, Jean Duncan, at 931-4222.

Eline Library: Check it out



Samuel M. Plato

Judith C. Owens-Lalude, Founder and Director of the J. Camille Cultural Academy, presents on Samuel M. Plato, a great American architect, contractor, designer,

and builder of the early 20th Century during the Jim Crow Era. Lecture is Feb. 9 at 2:30 p.m.

Friday Dance Party

Children ages 0-7 are invited to enjoy dancing on Feb. 12 at 10:30 a.m.

X's and O's Party

Bring your toddlers and preschoolers for love-filled stories, crafts

and, games on Feb. 13 at 10:30 a.m. Ages 2-5.

Feel the Rhythm

The importance of music to early literacy is stressed as children sing, dance, move, and play instruments in this session for ages 4-8. Held Feb. 27 at 10:30 a.m.



Code Words



Many property owners do not understand their relationship to land popularly known as an “easement”. The portion of land between the road pavement and the owner’s actual property line is owned by the City but must be maintained by the owner whose property abuts this area. At the same time, because this land belongs to the City, the abutting property owner may not change the integrity of the land without permission from the City.

This area includes the space between the back of the

sidewalk and the edge of the road pavement. If there is no sidewalk, it is approximately the area between your water meter and the edge of the pavement. Owners are responsible for maintaining this area, whether that means mowing or clearing the sidewalk when it snows.

While the owner is responsible for maintenance of this area, other activities require approval from the City engineer at 899-2518. Prior review and approval is required for any construction in this area, such as, altering your driveway apron, changing the grade, installing any paving material, or planting a tree or other plants.

Similarly, removal of existing improvements requires prior review and approval from the

City engineer, and removal of any tree from this area requires the prior approval of the City arborist at 899-2544. The City seeks to maintain the valuable tree canopy in the City for aesthetic, property value, and environmental reasons.

Finally, parking a vehicle on the street by this area is allowed on some streets provided the vehicle is parked parallel to the driving surface, facing the direction of moving traffic, more than 30 feet from any stop sign, and parked for no longer than 24 hours at a time in the same location. Some streets do have posted parking restrictions that must be observed, and parking perpendicularly or at an angle to the roadway is not allowed.

Good Neighboring

Garbage pickup

During snow events or when sidewalks are icy, garbage cans should be set out at the street. With severe weather, residents should check the city website for more details or sign up for Reach Alert for current information about sanitation, recycling, and junk pick up.



Snow treatment

When it snows or there is the threat of snow, keep your cars

off the street so the Public Works Department may salt and plow the roads.

Remember that you are responsible to clear snow and ice from the sidewalks in front of your house.

Pot holes

Report pot holes or street damage to city hall or use the Call St. Matthews 24/7 information system at 638-4STM (4786), options 2-2.

Pick up pet waste

Pet waste left by dogs whose owners let them poop in public

places contain bacteria and parasites that can threaten the health of wildlife and humans. When picking up dog waste, bag it, tie it securely, and properly dispose of it in a trash receptacle. When disposing of used cat litter, place it in a sealed bag and into a trash receptacle. Never put cat waste or used litter in garden soil.



Hot Off the Press

Heating Safety

As the weather chills and heating sources are used daily, make sure you are following these safety tips to prevent heating fires.

- Keep anything that can burn at least 3 feet away from heating equipment.
- Have a 3-foot kid-free zone around space heaters and open fires.



- Never use your oven to heat your home.

- Have a qualified professional install heating equipment according to local codes and manufacturer requirements.
- Have heating equipment and chimneys inspected and cleaned annually.
- Turn portable heaters off when leaving the room or going to bed.
- Use the kind of fuel specified by the manufacturer.
- Use a fire screen to stop sparks from flying into the room from your fireplace. Ashes should be cooled, put into a metal

container, and stored away from your house.

Heating Equipment Smarts

Follow manufacturer instructions when installing wood burning stoves or hire a professional to do it. Make sure the stove is vented to the outside to avoid carbon monoxide (CO) poisoning. As an extra precaution, install CO alarms.

If you smell gas near your gas heater, do not light it. Leave your home and call your local fire department or gas company.

Norton Hospital requests volunteers

Norton Suburban Hospital is seeking hospital ambassadors and gift shop and Baby Bistro & Boutique volunteers at Norton Women’s & Kosair Children’s Hospital. For more information on how you can

volunteer, contact Rita Ross at 893-1229 or rita.ross@nortonhealthcare.org. For ongoing volunteer opportunities, go to nortonhealthcare.com/Pages/VolunteerOpportunities.aspx.



It’s a great way to give back, meet others, and improve your health and well-being!

Be prepared when sirens sound



If one of Louisville’s 125 outdoor sirens goes off, what will be your response?

The first action residents should take is to go inside

and tune to a local radio station to learn why the siren is sounding. Typically, sirens are activated for

tornadoes, thunderstorms with high winds, and golf-ball sized hail. Sirens are also tested the second Tuesday of each month at noon.

To be prepared for an emergency, residents should make an emergency kit that includes water, nonperishable food, a manual can opener, first

aid items, prescription medicines, a flashlight, extra batteries, a radio, and a cell phone. Don’t forget to prepare any necessary items for pets.

For specific information about what to do in different types of emergencies, check out Disaster Tips at louisvilleky.gov/government/ema/disaster-tips.

Louisville Gas & Electric
502-589-1444

Fast path options are: 1-1-1 (gas) and 1-1-2 (electric).

**Emergency
Contact
Numbers**

Louisville Water Company
502-583-6610

To report emergencies like water main breaks or broken fire hydrants.

Your Works at Work

The leaves are gone, and Jack Frost has arrived. While many outdoor workers are hibernating, the St. Matthews Public Works Crews are working to make 2016 a great year.

Last Quarter's Accomplishments

- Completed leaf collection with more than the two scheduled pickups and an extended collection period, due to the warmer than normal fall.
- Removed debris from multiple storms.
- Patched pot holes.
- Cut back plantings for winter and trimmed in the City and its parks.
- Winterized irrigations lines in parks and ball fields and removed backflow preventers.
- Completed sidewalk improvements on Iola, Oxford, and Cornell.
- Cleaned Weicher Creek, located near the Shenandoah Condominiums.
- Regraded crushed stone alleys for winter.
- Finalized a drainage project along Corn Island Ct., including 100 feet of storm



pipe, 2 catch basins, and the regrading of 170 feet of drainage ditch.

- Replaced catch basin on Hycliffe.
- Completed a drainage improvement project on the downstream section of Trinity Hills Ditch. The City contracted with E-Z Construction for \$78,000 to provide labor, materials, and equipment.

Current Projects

The City of St. Matthews operates a comprehensive snow removal program. Public Works brines the streets prior to snowfall. After a significant snowfall, the City streets are cleared and salted. With smaller snow events, in an effort to be fiscally responsible, the City will only salt intersections. All major roads (Shelbyville, Westport, Hubbards, Browns, Bowling, and Breckenridge) are the responsibility of Metro and the state.

Other current projects include removing damaged ash trees on Bowling Blvd and replacing them with red bud trees and improving the stream in Community Park. The City is working with Joe

Asher, Inc. to improve 2,660 feet of poor quality stream within Community Park.

During construction, expected to end this month, the walking trail in Community Park will be closed.

Future Projects

Later in 2016, Public Works will conduct its annual City-wide tree planting within rights-of-way and public parks. If you would like to have a tree planted in the right-of-way in front of your property, call City Hall at 895-9444.

Other projects include drainage and roadway improvements on the alley between Sherrin and Browns Lane; possible sidewalk installation and drainage improvements within the right-of-way along North Hubbards from Westport Road to Rudy Lane; and potential drainage improvements for the houses on the east side of Girard Drive from Westport Road to Girard Court.



New Public Works head

Continued from p. 1



maintenance of City parks and making improvements to storm sewer systems. "I am

looking for opportunities to install green infrastructure within the City to help offset storm water issues," he said.

Stratman is married and has a 6-year-old son and a 6-month-

old daughter. He is an avid outdoorsman, enjoys spending time with family and friends, and is a University of Kentucky football fan. The latter, he said, makes him an eternal optimist.

Medicare seminar to be held Mar. 10

A free Medicare seminar will be conducted by Medicare Simplified, an organization with a mission to educate individuals about Medicare options. Medicare Simplified does not sell insurance. The program is

designed for individuals over 65 or turning 65 within a year. If you are already enrolled in Medicare, this is a great time to review your options free of charge.

The program will be held Mar. 10, 6-8 p.m., at the St.

Matthews Community Center, 310 Ten Pin Lane. Though the seminar is free of charge, reservations are required due to material preparation and meeting room accommodation. Please call 513-382-8533 to make a reservation.

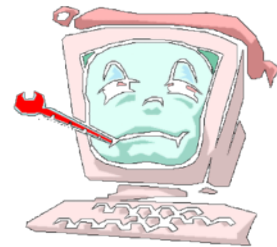
Get your computer repaired for free

A free computer tune-up and repair service continues to be offered the first Saturday of each month at the St. Matthews library from 1-4 p.m.

If you have a desktop computer, bring only the computer, as the technicians will have a mouse, keyboard, and monitor on site.

There is no charge for the service, and if you need parts to complete a repair, they will show you where you can purchase them and do the installation for you. The service will take place in the second floor meeting room. For more information, visit

computertunupandrepair.weebly.com.



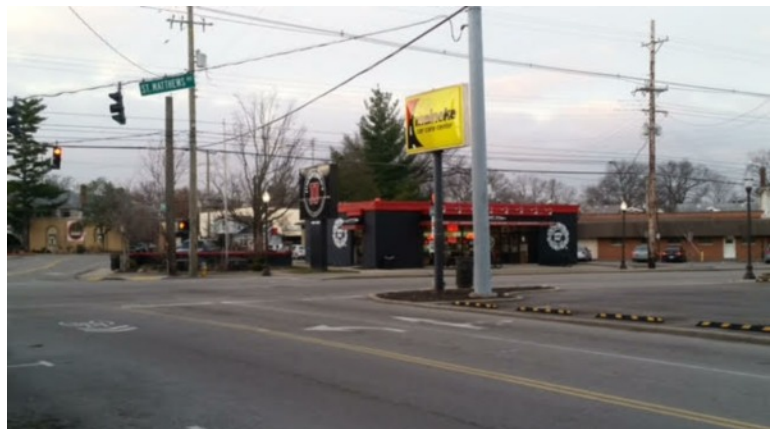
Hometown History - 2016

THEN

According to St. Matthews – The Crossroads of Beargrass, by Samuel W. Thomas, the building at left was a National Oil Corporation service station pumping Conoco gasoline located on Shelbyville Road, east of Meridian Avenue. The white building to the right of the Eline Chevrolet body shop was Plehn's Bakery.

NOW

Jimmy John's is now located where the Conoco station once stood. The Eline body shop was torn down, and Plehn's Bakery is to the right.



City of St. Matthews
3940 Grandview Avenue
P.O. Box 7097
St. Matthews, KY 40257-0097

STD PRST
U.S. Postage
PAID
Louisville, KY
Permit #976



ST. MATTHEWS

Your Elected Officials for the City of St. Matthews:

Mayor Richard J. Tonini

City Council

Bernard Bowling

Frank Flynn

Tim Holland

Stuart Monohan

Mary Jo Nay

Martha Schade

Tony Weiter

Patrick Wissing

**Council meetings begin at 7 p.m. on
the second and fourth Tuesday of
each month.**

City Council meeting minutes are
online at www.stmatthewsky.gov.

REACH ALERT

To receive emergency and/or
community service notifications
through St. Matthews' Reach Alert
system, sign up at
www.reachalert.com or call
1-877-307-9313.

Need to know?

Call St. Matthews

Automated Service

24/7 Information Line

638-4STM (4786)

Administration Press 1

Services Press 2

News Press 3

Police Press 4

Government Access

City Hall Office: 895-9444

Code Enforcement: 899-2512

Police Department: 893-9000

City Engineer: 899-2518

Public Works: 899-2517

Property Taxes: 899-2511

Police Records: 899-2537

Anonymous Tip Line:

**498-CLUE
(2583)**

Emergency: 911