

# ST. MATTHEWS NEWS

City of St. Matthews

Spring 1997

## City Hall

3940 Grandview Avenue  
P.O. Box 7097  
St. Matthews, KY 40257-0097  
Phone: 895-9444

Police emergency: 911  
Routine police: 893-9000

## Mayor:

Arthur K. Draut

## Council Members:

Bernard Bowling Jr.  
Harry Hargadon Jr.  
Mary Jo Nay  
Steve Resch  
Martha Schade  
Richard Tonini  
Gary Vincent  
Tony Weiter

## City Hall office hours:

Mon.-Thurs., 8:30 a.m. to 5 p.m.;  
Fri., 8:30 a.m. to 12:30 p.m.

## City Council meetings:

The council meets in open session at City Hall on the second and fourth Tuesdays of each month at 7 p.m.

## Laidlaw does some trash-talking, urging residents to follow the rules

Now that spring has arrived, Laidlaw Waste Systems would like to remind St. Matthews residents of a few procedures that will make the city's trash-disposal service run as smoothly as possible:

All yard waste must be put out at the curb. It will not be picked up behind the house or in alleys.

Please be considerate of your garbage men — if the bottoms of your trash cans are rusted out, or if they are missing handles, replace the cans.

Remember to have your trash, yard waste and materials for recycling ready for pickup by 7 a.m.

Tree limbs and bush trimmings must be cut in four-foot lengths, bundled and tied. Bundles may not weigh more than 50 pounds.

If you have a dog, please have it securely contained by 7 a.m. on collection day, or else put your trash cans outside the fence.

Remember: All trash over the

three-can limit must be put out at the curb or in the alley for pickup.

We will continue appliance pickups on the second Wednesday of each month. If you need a pickup, call a day or two ahead of time at 451-9905.

Yard waste may now be set out in either of two ways. You may keep using brown paper bags, or put the waste in trash cans labeled with stickers like the one enclosed with this newsletter. These cans shouldn't weigh more than 50 pounds. Yard waste in plastic bags will not be picked up.

You can rent or buy 95-gallon containers from Laidlaw that may be used for regular trash or yard waste. The purchase price is \$65; the rental cost is \$3 a month.

You will find one yard-waste sticker enclosed with this newsletter. If you need more, you can pick them up on the third floor of City Hall during business hours. Don't ask us to mail them to you — we cannot.

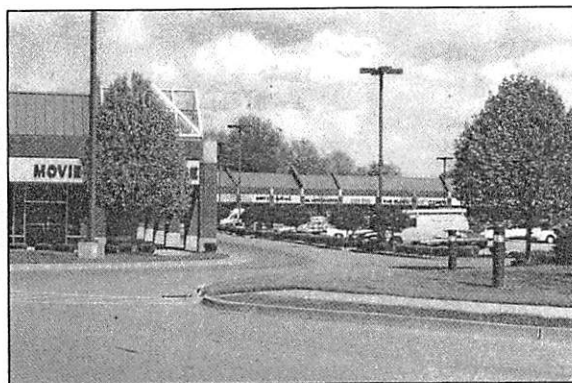


Features of the refurbished Brown Park include new stonework and paving around the pavilion and a colorful playground.

## Inside:

*Visual blight needn't be a sign of the times.  
St. Matthews/Eline Library goes online.  
Natural disaster: How not to take it personally.  
New-look Brown Park will reopen in mid-April.*

Scenic Kentucky cites Woodlawn Center as an example of development that preserves visual and natural beauty.



## Group urges SMBA to fight visual blight

A non-profit group that wants to improve the local "visual environment" recently brought its campaign against urban blight to St. Matthews.

Scenic Kentucky board member Edwin H. Perry, the guest speaker at the Feb. 19 meeting of the St. Matthews Business Association, called for more thoughtful landscaping and tighter regulation of signs and billboards.

Scenic Kentucky "challenges the

notion that ugliness is the price of progress," says Bonne Betz Loeb, the group's executive director.

The cities of Lyndon and Prospect have adopted new or amended sign and billboard standards, and Hurstbourne is now in the process of amending its sign ordinance.

For more information about the group and its campaign, or to volunteer, call Scenic Kentucky at 588-8839.



The clutter of business signs, billboards and utility poles along Shelbyville Road is used as an example of a blighted "visual environment."

## City police officers recertified in CPR

The St. Matthews Police Department has devoted a great deal of time this winter to training.

All officers have been recertified in CPR (cardio-pulmonary resuscitation). And in addition to the mandatory training offered by the state, the department has conducted hundreds of hours of in-house training. The department's goal is to be the best-trained, most professional police organization in the area.

Officer Debbie Marasa-Holly has been assigned to represent St. Matthews in the metro Crimes Against Children unit.

Video cameras have now been in-

stalled in six St. Matthews cruisers. (The first was a gift from Zachary Taylor American Legion Post 180.)

The department recently acquired a new in-car radar system known as "Stalker." The \$1,800 system is also a gift from the American Legion Post.

The department has a new dispatcher on the 4-to-midnight shift: Sonya Gibbs, a native of Texas and a tennis enthusiast. She worked most recently for Oldham County dispatch.

Crime prevention tip: Keep those bicycles locked up! And don't forget to register your bike with the police department. Come by the station to pick up a form.

## Internet, travel, home ownership among topics in library series

The St. Matthews/Eline Branch Library's April-May calendar includes the following *Tuesday Topics* programs for adults, all starting at 7 p.m. in the meeting room on the second floor of City Hall:

April 8: Ric Manning, "Gizmo" Editor of *The Courier-Journal's* Saturday *Scene: Internet Basics: An Overview*.

April 15: Sylvia Combs, of Freindship Force travel association: *Travel in New Zealand and Australia*.

April 22: Combs: *Travel in Thailand, Malaysia, Bali and Singapore*.

April 29: Nancy Vinsel, St. Matthews/Eline reference librarian: *Interesting Internet Business Sites*.

May 6: Tony Weiter, St. Matthews real-estate agent: *Preparing to Buy a Home*.

May 13: Bob and Fran Medley of Re/Max Properties East, and Jan Weber, mortgage specialist, Stock Yards Bank: *How-To Buy a Home*.

May 20: Bob and Fran Medley: *How-To Sell a Home*.

May 27: Mary Wise, of Mary Wise's Windows 'n' Walls store: *Re-decorating the Easy Way*.

Children's programming continues year-round, with toddler story hour every Friday at 10 a.m., followed by pre-school story hour at 11. Family story hour starts every Thursday at 7 p.m.

The library is planning to unveil its new internet workstation on April 14 and to begin offering a weekly introductory-level workshop on accessing the internet. To reserve an hour of online time, call 574-1771.

If you have any comments or questions about library activities, call 574-1771.

If you'd like to join Friends of the St. Matthews/Eline Library, come in to the branch and ask about membership.

# Best guard against disaster is preparation, fire officials say

Events such as the recent flooding should remind us that none of us is immune to natural disasters.

During such events, emergency services are quickly overwhelmed and many of the things we normally take for granted — transportation, utilities and food-distribution systems, for example — may not be available.

At times like these, your survival may be at stake. Here are a few simple things you can do to keep a natural disaster from becoming a personal disaster:

**Be well-informed.** Don't be taken by surprise. Watch for changing weather conditions and monitor news and weather broadcasts.

**Have a plan.** Take time now to anticipate your possible needs and to plan a course of action in the event of a tornado, flood, blizzard or earthquake. Find and mark your gas, electricity and water shut-offs. Evaluate other possible hazards in your home. Plan two escape routes from your

home, and consider where you might go if you were forced to leave your neighborhood.

**Build a survival kit.** Collect essential items in a waterproof container. Here's a sample inventory:

Flashlights; a portable radio; fresh batteries (be sure to replace from time to time); blankets; non-perishable foods (canned goods and dry foods; peanut butter is an excellent survival food); Sterno; first-aid kit; fire extinguisher; foul-weather gear; bottled water.

With a little planning and preparedness, you'll be better able to cope with the next disaster.

Remember: The best form of rescue is self-rescue — before the approach of danger.

**We need volunteer firefighters.**

Spring recruit classes are forming now. If you're interested in becoming a firefighter and performing a vital public service, call Maj. Stuart Monohan at 893-7825.

## MSD has a solution for basement-water woes

If you have basement-flooding problems caused by overburdened sewers (rather than by groundwater or surface runoff), the Metropolitan Sewer District has a solution that won't cost you a dime.

Under MSD's Basement Flooding Program, a homeowner hires a contractor to install whatever is necessary — backwater valve, ball shut-off valve, sump pump, submersible wastewater pump, or a combination — to keep the basement dry.

If the work passes plumbing inspections and meets MSD specifications, and all pumps and downspouts are disconnected from the sewer system, MSD will pay the cost to the homeowner, who pays the contractor.

To report a flooding problem, call 587-0603. MSD will send a letter explaining how the program works and how you can participate.



The layered columns in J. Graham Brown Park, which mark water levels recorded in historic floods, are made of limestone quarried in Southern Indiana.

## Animal-control law aims to cut down on unwanted pets

Jefferson County passed a new animal-control ordinance in December to encourage spaying and neutering of pets to reduce the number of unwanted puppies and kittens.

Owners of altered pets will continue paying a \$4.50 license fee, while people who own pets that are not spayed or neutered will have to pay \$15 this year, \$20 in 1998 and \$30 in 1999.

A new section of the ordinance states that a dog or puppy "may be restrained by a fixed-point chain or tether for no more than eight hours in a 24-hour period."

In an average year, the department's 15 Animal Control Officers investigate more than 25,000 complaints.

## Brown Park, refurbished at a cost of \$830,000, to be reopened soon

J. Graham Brown Park on Kresge Way in St. Matthews, closed since Sept. 1 for major renovations, is expected to reopen in late spring.

The 27-acre park, created in 1977, includes a 1.25-mile walking/running track, a colorful playground, a 55-space parking lot, two bridges across Beargrass Creek, an amphitheater with raised lawn seating, and Indiana-limestone columns marking historic flood levels.

The contractor on the project, E-Z Construction, also has planted about 12,000 daffodils, hundreds of azaleas and scores of maple, crab apple and flowering dogwood trees.

Edward Davis, E-Z's president, said recently that the work was all but finished, except for blacktopping the parking lot and cleaning up debris from recent flooding (which did no real harm to the park).

The city council is planning a grand-opening ceremony; the date and time have not been announced.

## Mark your calendar

The city and the St. Matthews Area Business Association will present three "Music in Brown Park" programs on Sunday evenings this summer. On June 8, the music will be provided by The Pier; on July 13, by the Derbytown Doodlers; and on Aug. 10, by the 113th Army Band. Each concert will run from 6 to 8 p.m. Admission is free.

The fifth annual "Sampling St. Matthews" exposition of area businesses and restaurants is scheduled for June 19 at 6 p.m. in Trinity High School's Alumni Hall. Admission is one can of food for Dare to Care.

The St. Matthews Little League season starts April 12. Merchants willing to be team sponsors or patrons (by contributing \$150 to \$500) may call or fax Joyce Blevins of Republic Bank: phone 584-3600, fax 584-3795.



**Park smart:** Park all cars and other those for sale — in driveways, not in ease-of-way. Parking on the street endangers and may impede emergency vehicles.

Please observe the posted speed limits on city streets. The police department's portable vehicle-speed recorder is meant to remind us that speed kills. **Slow down and arrive alive.**

**Dog walkers:** If your pet makes a deposit, *please* make a withdrawal. Also remember that pets outside their yards **must be on leashes** at all times.

Please don't set out trash until the **night** before your scheduled pickup.

vehicles — including  
ments or on rights-  
schoolchildren

ST. MATTHEWS NEWS  
City Hall  
3940 Grandview Avenue  
St. Matthews, KY 40207

BULK RATE  
U.S. Postage  
**PAID**  
Louisville, KY  
Permit #976