



St. Matthews Living

City of St. Matthews
3940 Grandview Avenue
P.O. Box 7097
St. Matthews, KY 40257-0097
Hours: M-Th 7:30 a.m. - 4 p.m.
F 7:30 -11:30 a.m.

MAY 2013

A job well loved and well done

When debris from an accident is whisked from the street or a walker marvels at the appearance of a new sidewalk, it is not the magic of some local Harry Potter but the sweat equity of Public Works employees who not only do their job well but love doing it. "When you get up in the morning and like going to work, it's a great thing," said backhoe operator and 11-year employee Tim Casey. "It's the best job I've ever had."

with shovels. "It was backbreaking work," he said. The city has grown, too. "When I got here, there was still a lot of farm land in St. Matthews and the land for Brown Park had just been donated. With the additional growth, there is a lot more to take care of."

The men Ridgeway has hired are equal to the job. Among other jobs, Dave Hill (11 years) has cleaned out ditches, cut undergrowth from the

water out of all the lines and removes the backflow preventers. In the spring, he reinstalls them and checks all the lines. "I love working here," he said.

Other workers like Moe Hibbard (16 years) and Jimmy Bowles (6 years) do landscaping and trimming, among other jobs. With St. Matthews boundaries reaching from Westport Road to Dutchmans Lane (including Dupont Circle), there is



St Matthews Works Department (left to right): Back Row - Robert Goode, Aaron McCarley, David Hill, Jimmy Bowles, Ray Wheeler, Don DeHaven; Front Row - Danny Webb, Moe Hibbard, Tim Casey, Supervisor Terry Ridgeway, Frank Tonini.

That's pretty much the consensus of Works Department employees, where the 10 men supervised by 36-year veteran Terry Ridgeway do everything from fill pot holes to plow snow from streets. Through the years, Terry has seen some changes. "When I first came to the department, we didn't have a plow to clear off the streets — we used a backhoe." And salting the streets meant standing in the back of a dump truck slinging salt

parks, cleared the swamp in Arthur Draut Park and, lately has been painting trees to keep beavers from gnawing them. "I enjoy outside work, even in the winter," he said. Frank Tonini (30+ years) supervises community service volunteers who help out St. Matthews.

Danny Webb (2 years) does many jobs, but is primarily responsible for irrigation of the parks, ball fields and City Hall. In the winter, Webb blows the

a lot of trimming and grass mowing. Aaron McCarley (7 years) supervises the summer mowing, including the parks, ball fields and common areas. As is typical with the multiple talents of the Works crew, McCarley's metal fabrication and welding skills were used to turn an MSD-donated truck into the City's SWAT truck. "You can fit 8-10 guys in there and it holds all the equipment and officer supplies

Continued on page 5

A Message From

The financial audit for the year ending June 30, 2012, for the City of St. Matthews has been completed by Stephens & Lawson Certified Public Accountants and was presented

to the mayor and city council at the February 26 council meeting. The audit found that revenues are up and that, although expenses are up moderately due to increased spending on public

works and public safety, expenses did not exceed the amount of revenue collected. The audit showed the City of St. Matthews' financial position to be in good standing.

Washburn crossing improvements move forward



District 7 Metro Councilman Ken Fleming reported that the Preliminary Engineering Agreement for the Washburn Avenue quiet zone has been

approved. Over the next couple of months, CSX will review construction plans. "Meanwhile," Fleming said, "we are getting the project logistics worked out so we are ready to begin work as soon as we receive the required approval."

This project requires Washburn Avenue to be widened at the crossing, as well as installing new barrier medians and upgrading signal equipment. Construction costs will be split between District 7 Capital Infrastructure Funds, St. Matthews and Lyndon.

Easy Being Green

Spring Cleaning: Do you know where your litter goes?

Littering isn't just a nasty habit; it's a real health threat. Plastic bottles, fast food wrappers and cups that get tossed on the ground carry germs and bacteria that can make you sick. Cups, gum wrappers, cigarette butts and other litter dropped into gutters and washed into storm drains affect the watershed.

Some of this litter may be coming from uncovered trash bins with the help of wind or hungry animals. Trash from a fast-food meal left in the back of a pickup truck also quickly becomes litter at 50 miles per hour. Please help keep our outdoors tidy and our environment clean.

Here are some helpful tips:

- Put cigarette butts in an ashtray, not on the ground
- Make sure truck beds are covered or tightly secured
- Pick up water bottles or other litter that falls out of your vehicle and dispose of it properly
- Participate in community trash cleanup events
- Reduce, Reuse, Recycle whenever possible

Taking these steps is healthy, simple and responsible. Be part of the solution.



Recycling is collected every other week on the same day as trash on weeks highlighted in red. Holidays are marked in blue and will delay recycling/trash one day.

May 2013

S	M	T	W	T	F	S
			1	2	3	4
5	6	7	8	9	10	11
12	13	14	15	16	17	18
19	20	21	22	23	24	25
26	27	28	29	30	31	

June 2013

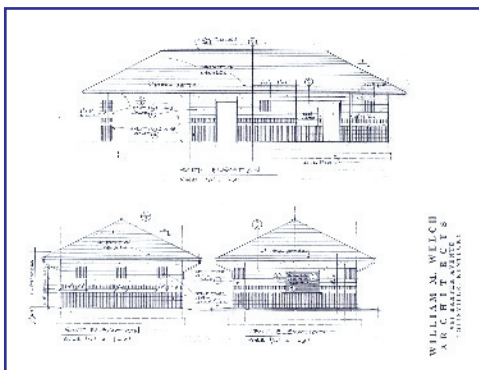
S	M	T	W	T	F	S
						1
2	3	4	5	6	7	8
9	10	12	12	13	14	15
16	17	18	19	20	21	22
23	24	25	26	27	28	29

30

July 2013

S	M	T	W	T	F	S
				1	2	3
4	5	6	7	8	9	10
11	12	13	14	15	16	17
18	19	20	21	22	23	24
25	26	27	28	29	30	31

Park Place



Upcoming improvements to St. Matthews parks will include a new restroom pavilion at Community Park.

Located at the end of Ten Pin Lane, Community Park was updated during the winter with the addition of a new playground surface. The design for the new restroom has been approved

and the construction contract will be out for bid soon. The structure will be built beside the large parking lot, making restroom access more convenient. Building will not commence until the Little League season has ended.

The last project in the multi-year capital improvement for Community Park will be the redesign and paving of the parking lot.

In other improvements, the non-native plant removal program at Draut Park on Bowling Boulevard is wrapping up. The Kentucky Department of Forestry will recommend native Kentucky trees to be planted in the park in November.

The beavers that took up residence in Draut Park several years ago are

taking a bite out of most any tree they see. Many of the trees along Bowling Blvd. were painted brown with sand in the paint to keep the beavers from cutting them down and building a log cabin. The City is still evaluating the effect the beavers are having on Draut Park and the surrounding neighborhood.



Beargrass Creek bank stabilization work in Brown Park held up well during the first major rainfall since improvements were made last year.

Eco-Tech donates tree

Eco-Tech, a provider of recycling collection and disposal services, donated a white oak tree to St. Matthews. The tree was planted near the pavilion in Brown Park. As part of its commitment to the environment, Eco Tech donated trees to all small cities within Metro Louisville.

St. Matthews has a regular tree planting program whereby residents can request a free tree be planted along the front of their property in the easement area. It is estimated that more than 1,800 red sunset maples, ash, ornamental pear and other species have been planted since the program began in 1995.

St. Matthews baseball, softball starts up

Come out and support your local boys and girls, eat a hot dog and revel in the Great American Pastime.

St. Matthews Babe Ruth Baseball and Softball has



begun at Community Park at the end of Ten Pin Lane. For a schedule of games and other information, see their website at <http://www.eteamz.com/stmatthews/>. Games are free, and teams are on the field!

Reserve ballpark, pavilion



St. Matthews has pavilions you can reserve at Brown, Community and Warwick Parks for a specific date and time at NO CHARGE. St. Matthews' residency is not required. To reserve, visit the city administrative office during regular business hours and complete a reservation form. You will need a photo ID.

Likewise, if you have a ball team and need a field, St. Matthews has several options.

A brochure regarding reservations of park pavilions or ball fields is available at City Hall, the library or online at www.stmatthews.org under the Entertainment section.

Police Beat

St. Matthews Police: Helping you help your community

Every day of the year the professional men and women of the SMPD prevent and solve crimes committed not only in our city but in other cities and counties as well. Part of their program is crime prevention education. Citizens can take action to lessen the opportunity for theft and vandalism:

- Lock car and home doors
- Don't leave belongings like purses, briefcases, packages, GPS devices visible in parked cars
- Use outdoor lighting at night
- Report unusual activity in neighborhood and work places
- Close and lock doors while you do yard work
- Lock parked bicycles and don't leave them in the yard overnight
- Store yard tools like mowers in locked garages and storage sheds
- Close windows, even if you are running a quick errand
- Cut back bushes and shrubs to provide visibility of windows from the street (don't give a burglar a hidden entrance to your home)
- Be alert to door-to-door solicitors who may be in the neighborhood to learn which residents are away

from home or what time residents return home from work

- Use SMPD FREE house watch when you need to be away from home

SMPD officers are trained and ready to help you any time you call. Be sure to ask them how you can do your part to help prevent crime in your community.



Crime Buzz

ID That Person

If you believe you can identify a person involved in criminal activity, check out the IDthisperson.com website. New images are posted every day of unidentified



suspects or persons of interest. Anonymous tipsters who help identify criminals may receive a \$25 reward.

House Watches

Free house watches are available from SMPD when residents are away from home. Telephone them at 893-9000 to schedule yours.

Anonymous Tip Line

If you have seen someone or something that seems suspicious, you can give the police a heads up anonymously by calling 498-CLUE (2583), Option 1. To notify the police of an action in progress, telephone SMPD directly at 893-9000. You do not have to give your name.

Seasons Greetings

St. Matthews Street Festival to be held May 18

The St. Matthews Street Festival, sponsored by the St. Matthews Area Chamber of Commerce, will be held Saturday, May 18. The day-long festival is held on Frankfort Avenue between Lexington Road

and Bauer Avenue and highlights the community's business, history, cuisine and style. It also showcases the area's retailers, restaurants and live entertainment. Family fun and activities include the Kidz Zone and Wellness Fair.



Historical St. Matthews

The Alexander Hamilton Historical Society of Kentucky meets on the third Saturday of each month at 10:30 a.m. on the second floor of St. Matthews City Hall. For more information regarding programs, call Lynn Olympia at 709-5070 or email her at Olympia1231@aol.com.

Following are the meeting topics:

- **May 18** AHHS member, Dr. Karl Kuhl will present a paper on *Athenian Democracy vs. American Democracy*.
- **June 15** AHHS treasurer will review *Robert Morris, Financier of the American Revolution* by Charles Rappley.
- **July 13** AHHS member Attorney Jim Hill will review *Mr. Adam's Last Crusade, John Quincy Adams's Extraordinary Post-Presidential Life in Congress*, by Joseph Whalen.

Good Neighboring



Pet care

St. Matthews has a leash law requiring pet owners to keep their cats, dogs and other animals on a leash when not on the resident's property. If the animal is in an unfenced area on the owner's property, it must be under the control of the owner at all times. Owners may not substitute an electric collar for a leash. See Ordinance 91.02 at www.stmatthews.org for more information.

Mowing

With warmer weather comes grass mowing. When cutting grass, don't blow clippings into a neighbor's yard or the street.

Sidewalks

Sidewalks are built for the use of pedestrians. When they are blocked, pedestrians are forced to walk in the street or on someone's private property. Neither cars nor motorcycles should be parked, either partially or fully, on sidewalks or in such a way that blocks a sidewalk from use. Likewise, debris should not be stacked on sidewalks. To report a damaged sidewalk 24/7, access the "Call St. Matthews" service line at 498-2255 and select option 4.

Yard waste

Free stickers for your designated yard waste cans are available at City Hall.



Catch basins

Don't pile debris in or over a catch basin, which will cause flooding during heavy rains.

Slow down!

This time of year, St. Matthews neighborhoods fill up with playing children, making it especially important to obey traffic laws. Observe speed limits and come to a full stop at signals and stop signs.

Check It Out

Join friends at the St. Matthews-Eline Library for a special technology series.

Tech Talk will take place on Thursday mornings at 10:30. The topics are listed below:

- **May 9** Digital Scrapbooking
- **May 23** Free ePublishing



- **June 13** 3D Printing & Modeling for Beginners

- **June 27** Party Planning

For more library happenings, go to the St. Matthews branch page on lfpl.org and click on Programs at St. Matthews.

Job well loved

continued from page 1

they need for a SWAT emergency," said McCarley.

Besides the yearly leaf pickup and snow removal and the daily potholes, mowing, tree planting and landscaping, the Works Department is responsible for remodeling City Hall and maintenance work on municipal properties owned by the City of St. Matthews. Don DeHaven (15 years) has done much of this work, including remodeling the women's locker room in City Hall.

Decisions regarding which projects to include on top of regular work are agreed upon by the Works Department and the City Council. One of

the projects this year was to pour a concrete base for bleachers at Community Park's Voll ball field. "You can't beat working with Mayor Bowling," said Ridgeway, who also worked with Bowling's dad before him.

Ray Wheeler (16 years) feels just the same way about Ridgeway, who he says never stands over them. "He does his job and lets you do yours," said Wheeler, "yet he's a really good supervisor, always making sure things are done the right way." Wheeler continued, "I love St. Matthews and the people here. I remember when I used to mow for the City and a lady would always bring me homemade sugar

cookies and lemonade. People are just like that here."

Robert Goode (10 years) couldn't agree more. "When I'm out working storm damage at 2 a.m., [Councilman] Rick Tonini comes out to work with me," he said. "They actually care about their City and about us. Most of the guys who work here live here. I love working for a department where no job is done halfway, but everyone goes above and beyond what they are asked to do."

Some might call that attitude magic in today's world of me, me, me, but, truly, it just comes naturally to the good people of the St. Matthews Works Department.

Your Works at Work

Project updates

The St. Matthews Works and Construction Departments have been hammering out several projects.

Updates on the projects are as follows:

- Briarwood Road drainage improvement is approximately 50 percent complete.
- Ridgeway Avenue at Westport Road drainage work is complete except for some ditch grading that will be done when the weather improves.
- Sidewalk repairs on Norbourne Boulevard and Wallace Avenue were scheduled to be completed by April 15.

Other continuing projects include:

- Constructing concrete pads for bleachers at Voll Field in Community Park
- Mulching landscape beds throughout the city
- Remodeling the SMPD women's restroom/locker room at city hall

- Planting trees throughout the city, in the city parks and in front of city hall

Extreme weather debris

In the event of a tornado or straight line winds, all debris will be picked up by the Works Department if it is placed at the street edge. It does not have to be bundled. In most cases, Works Department crews are out immediately after extreme events, clearing and picking up debris throughout the city.



IN MEMORY - DORIS FISHER

St. Matthews City Hall Business License Clerk Doris Fisher passed away March 9, following a short illness. Fisher had just completed 12 years of service. She will be sadly missed.

Tornado Readiness



We may not be in Kansas, but Kentucky has seen its fair share of tornadoes, especially when the seasons change and air

temperatures rise and drop rapidly. Louisville's sirens cycle every three minutes and are tested at noon the second Tuesday of every month.

To be ready for a tornado, be alert to the onset of weather by knowing what's going on outside and signing up for the Code Red phone notification system. To sign up, call MetroCall 311 and have a city employee enter your information. Ask about the new app for cell phones. Code Red has the ability to alert 1,500 numbers per minute.

Create a family plan for safety and communication. If you have a basement, go to its interior, away from west and south walls. Otherwise, go to a small, windowless, first floor, interior room like a closet or bathroom. Bathtubs are anchored directly into the ground, and sometimes are the only thing left in place after the tornado. Getting into the bathtub with a couch cushion over you gives you protection on all sides.

If you are at school, follow their tornado drill plan. If you are in a high rise, go to an interior stairwell or the basement. Do not stay in a mobile home or a car. Look for a sturdy building. A ditch may be the safest choice when in a car, unless there is danger of flooding from hard rain.

Make sure you have a plan where you will meet up with your family

after the tornado has passed. Conduct drills to rehearse your family plan.

The Red Cross suggests your family put together a disaster supplies kit including:

- A first aid kit with essential medication in addition to the usual items.
- A battery powered radio, flashlight and extra batteries.
- Canned and other non-perishable food and a hand-operated can opener.
- Bottled water (3 days supply).
- Sturdy shoes and work gloves.
- Written instructions on how to turn off your home's utilities.

Don't let severe weather send you whirling – have a plan in place so that you are able to help yourself and your neighbors.

In the Kitchen

The kitchen is one of the more dangerous rooms in the house. Open flames, sharp knives, hot pots and scalding liquids can cause serious injuries. Look at your kitchen from the perspective of an accident waiting to happen. Are papers stacked too close to the range or cooktop? Are knives easily accessible to children? Here are some suggestions to consider in relation to preventing burns and/or a fire:

- Keep the gas cooktop away from open windows where wind could extinguish the cooking flames.
- Keep the handles of pots and frying pans turned inward on the kitchen range so that they cannot be knocked over by accident.
- To prevent grease fires, keep the stove clear of anything flammable, including pot holders, napkins and towels.
- Keep baking soda on hand to extinguish fires.

On the Grill

Barbeque

- Never leave a barbecue grill unattended.
- Place the grill well away from siding, deck railings and out from under eaves and overhanging branches. Don't use or store grill on a porch or balcony.

Charcoal

- Purchase the proper starter fluid and store out of reach of children and away from heat sources.
- Dispose of charcoal coals only after they are cool. Empty the coals into a metal container with a tight-fitting lid that is used only to collect coals. Place the container away from anything that can burn. Never empty coals directly into a trash can.

Propane Grills

- If you smell gas while cooking, immediately get away from the grill and call the fire department. Do not attempt to move the grill.
- Light a propane grill only with the cover open.

Friend Lyndon Fire on Facebook



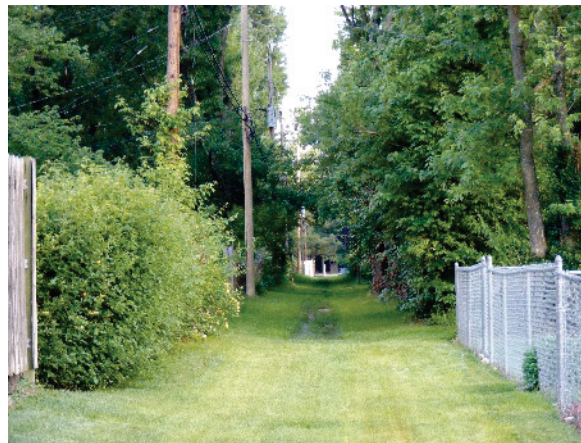
Lyndon Fire Protection District, which covers part of the city of St. Matthews, is asking everyone to “friend” them on their new Facebook page at www.facebook.com/Lyndonfiredepartment. The site promotes fire safety. You do not have to live in their district to participate.

Code Words

Spring has sprung! St. Matthews residents can be part of the rejuvenation and revitalization associated with Spring starting now by checking the condition of lawn and outside maintenance equipment. Having a lawn mower serviced and the blade replaced or checking on pruning and cutting tools will make yard work easier during the growing season.

What, you may ask, does this have to do with “Code Words”? It is pertinent because one of the most commonly heard complaints made to the Code Enforcement section at this time of year is that someone is not keeping up with their grass or other plant growth. The majority of our residents regularly keep their grass cut, but circumstances have led to the grass on a resident’s property exceeding the eight inch height limit set by city code. After receiving a call regarding the property, Code

Enforcement performs an inspection. If there is a violation, the Code Enforcement officer will attempt to contact the resident and/or owner of the property to have the grass cut. If no



one can be contacted or the request is not acted upon quickly, a formal notice of violation (including the penalty for non-compliance) is sent to the property owner. This step is the exception rather

than the rule because most of our citizens act quickly to rectify the situation.

Similarly, but apparently not as widely understood, is the obligation of property owners to keep grass cut and to remove any voluntary growth in easements and adjoining alleyways, whether the alley is improved or not. Many of the drainage facilities within the city are on easements, and this means that the property owner is responsible for keeping the easement area free of any trees, shrubs or other growth unless specifically authorized by the City. Obviously, depositing of any kind of material in the easement area is not allowed. The failure of property owners to maintain these easement areas is more often an issue than is high grass in the yard itself.

Do your part this Spring by making a conscious effort to keep St. Matthews a beautiful place.

City of St. Matthews
3940 Grandview Avenue
P.O. Box 7097
St. Matthews, KY 40257-0097

STD PRST
U.S. Postage
PAID
Louisville, KY
Permit #976

Your Elected Officials for the City of St. Matthews:

Mayor Bernard F. Bowling

City Council

Arthur K. Draut

Frank Flynn

Stuart Monohan

Mary Jo Nay

Martha Schade

Richard Tonini

Tony Weiter

Patrick Wissing

**Council meetings begin at 7 p.m. on
the second and fourth Tuesday of
each month.**

City Council meeting minutes are
online at www.stmatthews.org.

E-CONNECTION

To submit your email address to
receive important St. Matthews
updates, visit the city website at
www.stmatthews.org or call city
offices. Email addresses will not be
shared with other parties.

Need to know?

Call St. Matthews

Automated Service

24/7 Information Line

638-4STM (4786)

Administration Press 1

Services Press 2

News Press 3

Police Press 4

Government Access

City Hall Office: 895-9444

Code Enforcement: 899-2512

Police Department: 893-9000

City Engineer: 899-2518

Property Taxes: 899-2511

Police Records: 899-2537

Anonymous Tip Line:
498-CLUE
(2583)

Emergency: 911